

EN54-24 CERTIFIED LOUDSPEAKERS

RGS8TAB

ROUND METAL CEILING LOUDSPEAKERS



RGS8TABX/EN
RGS8TAB/EN
RGS8TAB/ENC

The RGS8TAB series is made of metal, highly efficiency, and contains two 3.5" speaker drivers with 2x6W transformer. The mounting system has been improved once more: 3 spring clamps with cropped leg spring, increased clamp force and shortened tension distance. This allows a quick and easy mounting. The high quality broadband chassis and transformer make part of the chassis. The grill can be release from the front side.

RCS/RLS

METAL DUAL-CONE AND COAXIAL CEILING LOUDSPEAKERS



RCS4FT/EN - RCS4FT/ENC
RCS5FT/EN - RCS5FT/ENC
RCS6FT/EN - RCS6FT/ENC
RCS8FT/EN - RCS8FT/ENC



RLS5T/EN
RLS5FTP/EN
RLS5FTS/EN



RCS5FTCX/EN - RCS5FTCX/ENC
RCS6FTCX/EN - RCS6FTCX/ENC
RCS8FTCX/EN - RCS8FTCX/ENC

The RCS is made from a steel epoxy coated chassis incorporating a twin cone driver, and RLS is also made from a metal design with either a fire dome module (RLS5FTS/EN) or without (RLS5T/EN). The RCS/RLS has a wider frequency range than the standard single cone and this makes the RCS more suitable for use in applications where background music is a primary requirement.

The RCS employs a two-way speaker system comprising a bass mid-range driver and separate tweeter. The bass response has been extended to incorporate in both music and vocals which tailors to given an exceptionally smooth performance whilst maintaining an high sensitivity.

APC / SENTRY / PMC

CLOSED-BACK CABINET LOUDSPEAKERS



APC4T/EN - APC4T/ENC
APC6BT/EN - APC6BT/ENC

The APC is manufactured from ABS plastic with an added polymer to avoid discoloration in bright sun light, making them UV protected, smoke and halogen free. The APC loudspeaker is all fitted with epoxy coated steel grilles.



SENTRY6ST/EN - SENTRY6ST/ENC
SENTRY6RT/EN - SENTRY6RT/ENC

The SENTRY is constructed from epoxy coated high grade steel and can be installed on solid ceilings or walls. Supplied with dual gland entries, which give the installer the option of loop in loop out termination thus avoiding the need for a separate junction box, these cabinets are both robust and aesthetically pleasing.



PMC4T/EN - PMC4T/ENC

The PMC is a marine, water resistant molded cabinet loudspeaker with its treated cone, offering a solution for areas where speech is required in damp, wet, high humidity and salt laden environments such as boat decks, and other applications like bathrooms and canteens.

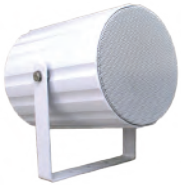


FINE SPEAKER SOLUTIONS



CELL / CAD

METAL / PLASTIC SOUND PROJECTORS



CELL10T/EN - CELL10T/ENC
CELL20T/EN - CELL20T/ENC
CELL10BT/EN - CELL10BT/ENC

The CELL is an elegant sound projectors, manufactured from epoxy coated high grade aluminum extrusion with dual cone drive units which gives both clear speech and excellent background music reproduction.

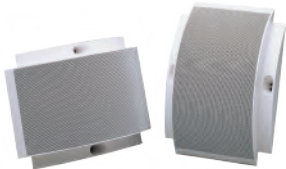


CAD10T/EN - CAD10T/ENC
CAD20T/EN - CAD20T/ENC

The CAD weatherproof sound projector offers a combination of style and performance. Manufactured from an ABS-molded component with built-in UVL (ultra violet light) protection with a high quality and Plastiflex cone.

PBC / PWC / MWC / WWC6TAB

OPEN-BACK WALL-MOUNT LOUDSPEAKERS



PBC6T/EN - PBC6T/ENC
PBC10TCX/EN - PBC10TCX/ENC

The PBC/PWC/MWC are manufactured from ABS plastic with an added polymer to avoid discoloration in bright sun light ,making them UV protected, smoke free and no halogen as well. They are all fitted with epoxy coated steel grilles. These exceptional loudspeakers are both stylish and elegant and offer a cost-effective alternative to the conventional rectangular styled cabinet loudspeaker.



PWC6T/EN - PWC6T/ENC



MWC6T/EN - MWC6T/ENC

The MWC wall-mounted speaker is made out of powder-coated solid steel housing with flat grill and developed for wall and hard ceiling applications like sporting venues. A round surface mount speaker with strong acoustic behavior and high efficiency. Excellent for music and speech. Equipped with a full range speaker this product delivers excellent sound in a unobtrusive way.



WWC6TABX/EN
WWC6TAB/EN
WWC6TAB/ENC



The WWC6TAB series is a combination of modern design, high quality sound performance, and an ideal voice alarm speaker for fire alarm and detection system. It contains two 3.5" speaker drivers with 2 x 6W transformer.

APH / MSH / MHS

PLASTIC / METAL WATERPROOF HORN LOUDSPEAKERS



APH10T/ENC
APH20T/ENC
APH30T/ENC



MSH30/T
MSH60/T
MSH30T/EN
MSH30T/ENC



MHS20T/ENC

The APH and MSH horn speakers are lightweight, weatherproof, non-corrosive, resistant to salt laden air and have been designed for high quality sound reinforcement. Made in a ABS molded compound to meet UL94V0 fire retardant standard, smoke free, no halogen with UVL (ultra violet light) protection and supplied with a high grade stainless steel epoxy coated straight bracket. All these features make them more suitable for both indoors and outdoors use.



FINE SPEAKER SOLUTIONS



GB

SPHERICAL LOUDSPEAKERS

The GB is a true omni-directional spherical loudspeaker, providing coverage angles of 360 degrees horizontal and 140~160 degrees vertical, giving an even dispersion over the audio spectrum. This excellent dispersion together with smooth frequency response and carefully controlled performance. The GB series offers solutions to many problems that arise in difficult acoustic applications. Ideally suited for large open spaces such as warehouses, retail complexes, concourses, factories etc.



GB15T/EN
GB20T/EN

MCS

METAL COLUMN LOUDSPEAKERS



MCS20T/EN - MCS20T/ENC
MCS40T/EN - MCS40T/ENC
MCS80T/EN - MCS80T/ENC

The MCS offers a combination of elegant styling, robust construction and high performance. The enclosure is tuned to give a wide frequency range not normally associated with column loudspeakers and produces high quality music and speech reproduction. Ideally suited for use in



ATEiS Europe B.V.
Europe & Africa
Celsiusstraat 1 - 2652 XN Lansingerland
(Rotterdam Region), Netherlands
Phone: +31 (0)10 2088690 (EMEA)
Phone: +49 (0)699 675 9193 (Germany)
info@ateis-europe.com (EMEA)
Vertrieb@pax-proavgroup.de (Germany)



Penton Audio USA
USA, Canada & Latin America
21 Sabin Street Pawtucket, RI 02860, USA
Phone: +1 401-727-1600
Fax: +1 401-727-0003
info@penton-usa.com



ATEiS France
8, rue de l'Europe - ZA de Font Ratel - 38640,
Claix, France
Phone: +33 (0)4 76992637
Fax: +33 (0)4 76992631
contact@ateis.com



ATEiS China
Room 610, No.255 Wubao Road, Minxing
district, Shanghai, China
Phone: +021-54495191/92
Fax: +021-54495193
sales@ateis.com.cn



Penton UK
UK & Ireland
Unit 2, Teville Industrials, Dominion Way,
Worthing, West Sussex BN14 8NW
Phone: +44 (0)1903 215315
sales@pentonuk.co.uk



ATEiS Far-East
2F No.60, Xinghua 2nd Rd. Tanzi,
Taichung, Taiwan
Phone: +886 4 25333840
Fax: +886 4 25333830
sales@ateis-fareast.com



ATEiS Suisse SA
Switzerland & Southeast Europe
Avenue des Baumettes 9, 1020 Renens VD,
Switzerland
Phone: +41 (0)218812510
Fax: +41 (0)218812509
info@ateis.ch



ATEiS SE PTE. LTD.
South-East Asia
Blk 5002 Ang Mo Kio Ave 5, #03-01B TECHplace
II, Singapore 569871
Phone: +65 6481 1968
Fax: +65 6481 1960
info@ateis-se.com.sg



ATEiS Middle East FZCO.
Middle East & India
LIU No. 11 , Dubai Silicon Oasis,
293640 Dubai, United Arab Emirates
Phone: +971 (4) 3262730
Fax: +971 (4) 3262731
info@ateis.ae

