



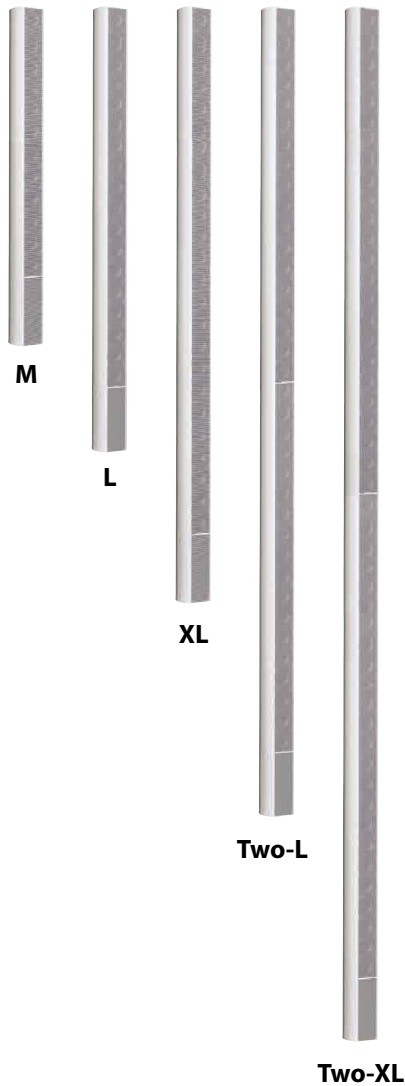
MESSENGER PRO

Side Lobe Free Steerable Digital Line Array



SOUNDS RIGHT FROM THE START !

- Speech & Background Music Reinforcement
- Patented Algorithm for Side Lobe Suppression
- Up to Three Lobes Can be Created for Multiple Vertical Sound Dispersion



MESSENGER PRO

- M** 12 Active Channels - 5-4/5ft (1.7m) 94 dB to 82ft (25m)
- L** 18 Active Channels - 7-7/8ft (2.4m) 94 dB to 98ft (30m)
- XL** 24 Active Channels - 10-1/5ft (3.1m) 94 dB to 131ft (40m)
- Two-L** 36 Active Channels - 15-2/5ft (4.7m) 94 dB to 197ft (60m)
- Two-XL** 48 Active Channels - 20-1/2ft (6.2m) 94 dB to 230ft (70m)

- Specially designed for high quality speech and background music applications in reverberant acoustic environments
- Beam steering ± 45 degrees up to 3 lobes simultaneously
- Variable control of vertical dispersion between 45 and 5 degrees
- Variable acoustic centre 9 steps, from asymmetrical to symmetrical
- Ambient noise sensing for automatically adjusts of output volume
- Support EASE DLL, for advanced room acoustic simulations
- Internal HF carrier loudspeaker surveillance/Temperature sensor with frost protection/Ambient noise sensor (optional)
- Integrated DSP control with Noise Gate, Delay, PEQ, Limiter, Ethernet IGMP Audio Stream, VoIP Receive, Ducker, DNM

SMARTVOX-II-30 / SMARTVOX-II-60

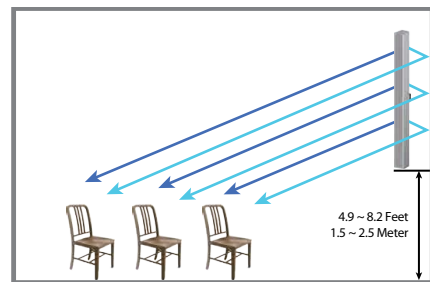


- Filtering technique based on Messenger Pro™ patent algorithm
- Wide dispersion coverage
- Built-in 50V/70V/100V transformer
- Constant sound level and precise sound direction pattern in vertical placement
- With higher 'direct-to-reverb' ratios, and lead to a higher intelligibility figure (STI)

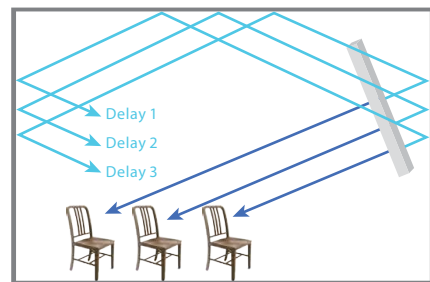


ORBIT

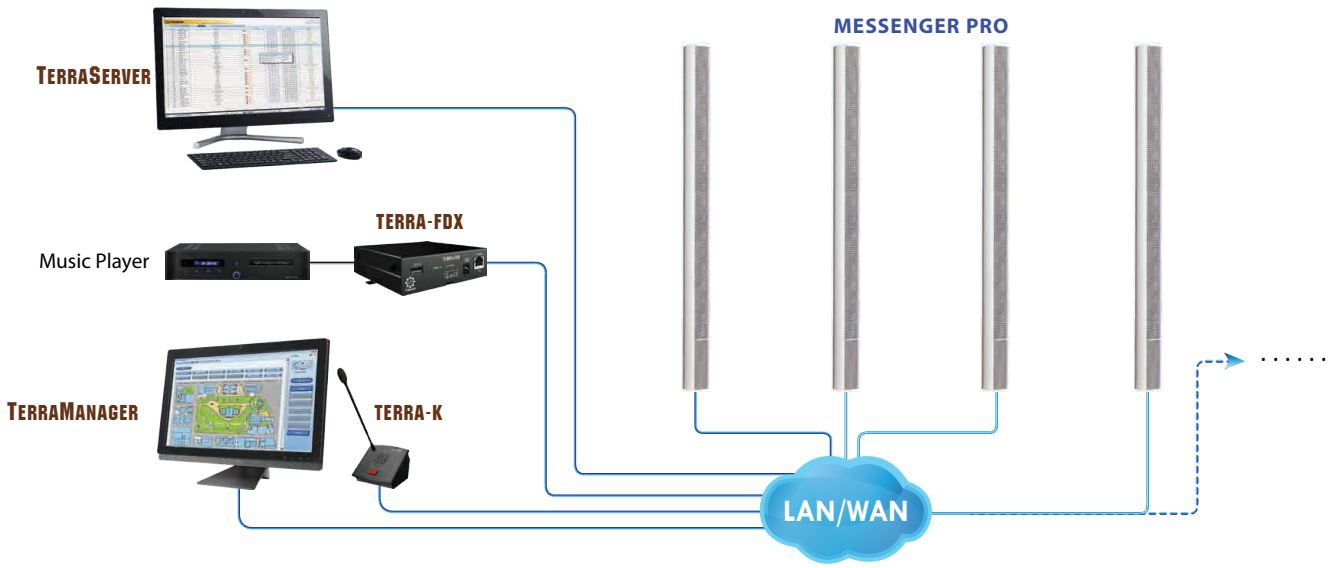
- M** 3 rows of 12 loudspeakers, 1003 mm, 94 dB to 10m circle
- L** 3 rows of 18 loudspeakers, 1669 mm, 94 dB to 15m circle



Sound Field of SMARTVOX-II-30/60 Line Array (figure 2)



Sound Field of Ordinary Column Line Array (figure 1)

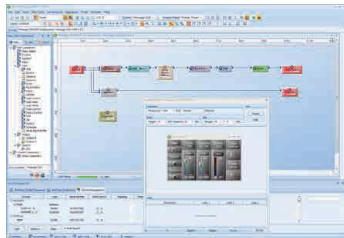


Lobe Shaping by Messenger Pro Design Software

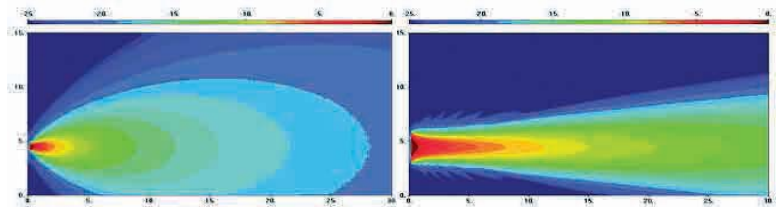
The acoustical centre of the array can be adjusted to match exactly for the acoustic requirements of the installation, the mounting height and other environmental needs. Each driver centre of the array is separately powered and processed, therefore, all the lobe shape variations between a symmetrical and an asymmetrical arrangement can be made with the simple selection of combo-box in the Messenger Pro software.

Directional Active DSP Array System

Different Opening Angles
A variety of opening angles from 45° to 5° with a single Lobe

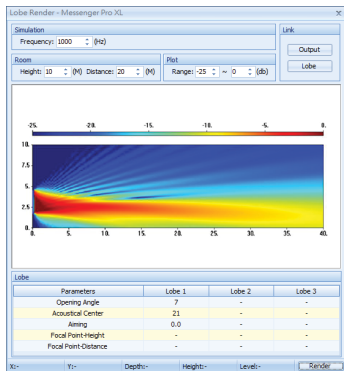


Messenger Pro Design Software



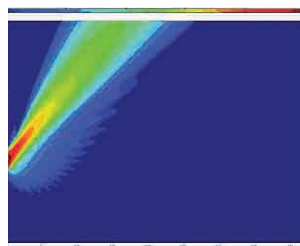
45 degrees opening angle

5 degrees opening angle

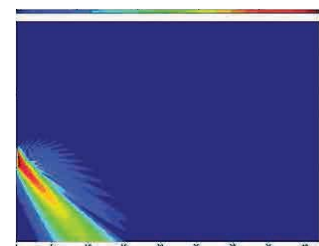


Windows-based PC Setup

Accurate Beam Steering
A variety of opening angles from 45° to 5° with a single Lobe

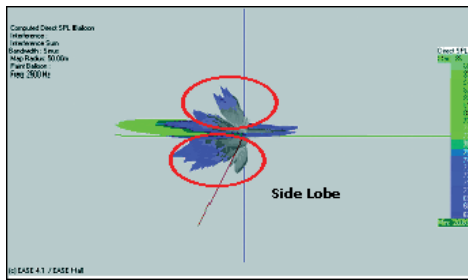


+45 degrees Azimuth

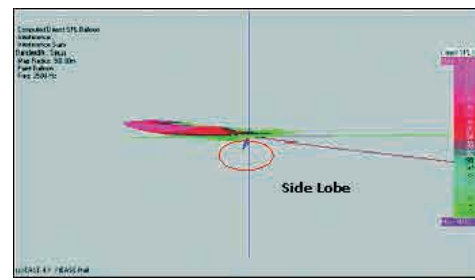


-45 degrees Azimuth

PATENTED SIDE LOBE SUPPRESSION



Conventional DSP Line Arrays



Messenger Pro with Patented Algorithm

APPLICATIONS

- Airports
- Large Train Stations
- House of Worship
- Large Scale Halls
- Shopping Malls
- Industrial Halls

REFERENCES

- Sagrada Familia, Barcelona
- Liverpool Cathedral, UK
- Frankfurt Airport, Germany
- Nice Côte d'Azur Airport, Nice
- Hong Kong Airport, China
- Ski Dubai, UAE
- Oval Stadium, London
- St. John's Cathedral, Valletta



ATEIS Europe B.V.
Europe & Africa
 Celsiusstraat 1 - 2652 XN Lansingerland
 (Rotterdam Region), Netherlands
 Tel: +31 (0)10 2088690
 info@ateis-europe.com



ATEIS France
 8, rue de l'Europe - ZA de Font Ratel,
 38640 Claix, France
 Tel: +33 (0)4 76992630
 contact@ateis.com



Penton UK Ltd.
UK & Ireland
 Unit 2, Teville Industrials, Dominion Way, Worthing
 West Sussex, BN14 8NW, United Kingdom
 Tel: +44 (0)1903 215315
 Fax: +44 (0)1903 215415
 sales@pentonuk.co.uk



ATEIS Far East Corp.
Far-East Asia
 2F No.60, Xinghua 2nd Rd. Tanzi,
 Taichung, Taiwan
 Tel: +886 4 25333840
 Fax: +886 4 25333830
 sales@ateis-fareast.com



ATEIS Middle East FZCO.
Middle East & India
 LIU No. 11, Dubai Silicon Oasis,
 293640 Dubai, United Arab Emirates
 Tel: +971 (4) 3262730
 Fax: +971 (4) 3262731
 info@ateis.ae



Penton Audio USA
USA, Canada & Latin America
 21 Sabin Street Pawtucket, RI 02860, USA
 Tel: +1 401-727-1600
 Fax: +1 401-727-0003
 info@penton-usa.com



ATEIS China
 Room 610, No.255 Wubao Road, Minxing
 district, Shanghai, China
 Tel: +021-54495191/92
 Fax: +021-54495193
 sales@ateis.com.cn



Xavtel Communications RUS Ltd.
 Russian Federation, 115280, Moscow
 Leninskaya Sloboda str., 26 bld. 28,
 Business Center "Slobodskoy", oce#122
 Tel/Fax: +7 495 803 3655
 info@xavtel.ru.com



ATEIS Suisse SA
 Avenue des Baumettes 9, 1020 Renens VD,
 Switzerland
 Phone: +41 (0)218812510
 Fax: +41 (0)218812509
 info@ateis.ch



ATEIS SE PTE. LTD.
South-East Asia
 Blk 5002 Ang Mo Kio Ave 5, #03-01B TECHplace
 II, Singapore 569871
 Phone: +65 6481 1968
 Fax: +65 6481 1960
 info@ateis-se.com.sg

