



Bars & Restaurants







What is ambience?

Ambience is everything that surrounds us, every stimulant recorded by any of our senses. Hospitality businesses these days should prioritize the experience of clients. The finest cooking, cleanest silverware and the most elegant design hold sway in most contemporary venues.

But what about sound? Visitors who enjoy the music are far more likely to spend more time in any setting. The used audio system in this encounter, is undeniably as crucial as the music being played.

*“AUDAC Touch™ is the connection
we have been looking for.”*

- Dominic van der Heiden



AUDAC Touch™

AUDAC strongly believes in out of your pocket controllable audio solutions and further establishes its progressive position through developing the AUDAC Touch™ total system control platform.

Using this freely available solution specific dashboards can be created and customized, allowing the control for multiple devices from one single application.



Not just an audio solution

Besides the well-known web-based control solutions, a variety of functions from different devices can be merged together as widgets in one single screen. Once configured, user accounts will be saved in the cloud allowing your dashboards to be used from any mobile device. Different levels of access are possible, offering system operation, system configuration or overall system administration functionalities. Hereby, authorization for every type of account can be specifically configured.

Use up to 5 simultaneous socket connections to various supporting AUDAC devices, including all matrix systems, audio players and other serial communication supporting devices in combination with APC100 gateways, such as WaveDynamics™ amplifiers.



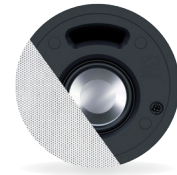


- ▶ Total & application specific system control
- ▶ Simultaneous multi-device support
- ▶ User configurable dashboards
- ▶ Different level user accounts (cloud)
- ▶ Supports 3rd party equipment



High-end ceiling speakers

The CELO series is AUDAC's high-end slim ceiling speaker series, consisting of four models which guarantee an optimal experience for every situation and application.



CELO2

2" High-end slim ceiling speaker

The ultra-compact size enables the CELO2 to smoothly integrate into any interior like no other loudspeaker. The 2" full-range aluminum cone driver is fitted in a ported enclosure with closed backcan. This way, a clear and crisp sound is guaranteed with an improved response in the low frequencies.

20W

8 Ohm

16 Ohm

Available colours:



CELO2D



CELO5

5" High-end slim ceiling speaker

The uncompromised design of the CELO5 results in the ideal match between quality and size. It produces a stunning sound which is extremely detailed and clear. The two-way construction consisting of a 5" aluminum cone woofer and a complementary 1" dome tweeter are smoothly matched using a high-quality crossover network.

100W

8 Ohm

Available colours:



CELO6

6" High-end slim ceiling speaker

The perfect match for a large number of applications is realised with the CELO6 loudspeaker. This loudspeaker consists of a 6" aluminum cone woofer with a complementary 1" dome tweeter. This combination guarantees the perfect harmony and balance of sound, allowing you to accurately distinguish each element of your favourite songs.

120W

8 Ohm

Available colours:



CELO8

8" High-end slim ceiling speaker

The most powerful of its kind is the CELO8 loudspeaker, which is constructed using a 8" aluminum cone woofer and a complementary 1" dome tweeter. This combination allows the loudspeaker to reach lower frequencies which results in a high-fidelity sound with powerful and detailing low frequencies, unheard of in its class.

160W

8 Ohm

Available colours:







Guiliano pastabar

Maasmechelen, Belgium

The Giuliano pasta restaurant chain chose AUDAC for its entire audio system in Maasmechelen, Belgium. The large complex with over 180 seating spots and more than 40 staff members is located in shopping centre Maasmechelen Village. Due to the high ceilings and the size of the venue, both the local AUDAC dealer S2 Pro and end customer relied on AUDAC's experience for the choice of models and location of them. In total they installed 10 x ATEO6 loudspeakers at the larger dining area with 2 x SX408 complementary 8" subwoofers.

The restaurant also houses an orangerie where 8 x CELO8 ceiling speakers provide an ideal audio solution. For the kitchen, toilets and washing area they chose for a combination of CS75 ceiling speakers and WX502/OB weatherproof wall speakers. Besides the sub cabinets which were powered by DPA series amplifiers, the complete installation was powered by the digital CAP series multi-channel 100V amplifiers. To divide and control this audio system into separate zones they installed a web based MTX88 audio matrix.

The result is an astonishing sound throughout the complete restaurant satisfying each customer with detailed Italian classic music.



Wall panel control

This extremely efficient way of controlling your user interface is incorporated in AUDAC wall panels, WaveDynamics™ amplifiers, audio players and MTX matrixes. It allows an easy and user-friendly way of controlling volume and more advanced settings such as EQ and source selection. The Scroll-Push™ button also provides a design advantage to the front of the device by replacing a large selection of buttons.



DW5066

Digital all-in-one wall panel

Whether it is for local audio source/volume control or for full installation/scene selection management, the DW5066 is a user-friendly interface peripheral for R2/M2 matrix systems. In addition, built-in RCA line source inputs and an XLR microphone input (15V phantom power available) are locally mixable, the signal which can be patched to any output zone. These inputs may also be configured as outputs.

Available colours:





Compact wall speakers

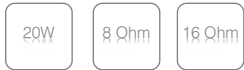
The ATEO is a series of extraordinary loudspeakers specially designed for fixed installation indoor applications, ranging from modern residential applications to the most demanding designer applications in environments such as retail stores, pubs, restaurants or even clubs.



ATEO2

2" Wall speaker
with CleverMount™ bracket

The ATEO2 consists of a 2" full-range aluminum cone speaker guaranteeing a clear and crisp sound with minimal visual impact, fitted in an elegant and compact enclosure.



Available colours:



ATEO2D



ATEO4

4" 2-Way Wall speaker
with CleverMount™ bracket

The ATEO4 is the 4" version, with a 1" dome tweeter and a 4" Mid / Low frequency driver, ensuring a true-to-nature, high-fidelity reproduction of music and speech.



Available colours:



ATEO6

6" 2-Way Wall speaker
with CleverMount™ bracket

The ATEO6 is the 6" version, with a 1" dome tweeter and a 6" mid/low frequency driver. The ABS housing which is fitted with high quality components ensures a stunning design and elegant look.



Available colours:



DANENKA

BAR - RESTAURANT





Café Panenka

Rotterdam, the Netherlands

Panenka is a luxury sports bar and restaurant with a touch of gentleman's club in the center of Rotterdam. They also offer different meeting rooms for hire while the entire setting is divided in two floors. Because of their complex multi-room layout, they were looking for an audio system that could be controlled with ease from every room. The AUDAC partner FrameWave found a solution for their issues and introduced them to the MTX48 4-zone audio matrix.

In this stylish sports bar you can now control the volume and audio input in every of the four rooms. When the game is over you now have the possibility to switch from the television audio to a music source thanks to the MWX45 wall panel controllers and MWX65 all-in-one wall panel that are installed in every room. FrameWave even provided Panenka with a special application that can be used by the staff members and their customers. The AUDAC Touch™ application enables them to control the complete system from their pocket when the bar is too crowded to reach the wall panels. Customers are able to use the same application and can select the same playlist when they are moving from room to room.

The AUDAC Touch™ app can be configured in different user levels so that the customers who use the app don't control anything more than they need to.

Now you can enjoy a rugby or football game in style on a 150" full HD screen while listening to a pair of ATEO4 wall speakers powered by a DPA154 quad-channel Class-D amplifier. The main bar is equipped with ATEO4 wall speakers in combination with a BASO10 bass reflex cabinet that are powered by a SMQ350 WaveDynamics™ quad-channel power amplifier.



Universal wall speakers

The WX- series offers a wide range of solutions for both outdoor as indoor applications. Thanks to a watertight connector, a durable ABS housing, a specially designed drain hole and a DuraWeather™ coating, this range has an IP55 rating and has proven its worth for decades in extreme weather conditions.



WX302

3" wall speaker 2-way

The WX302 is a 2-way performance speaker with a 3" low frequency loudspeaker and a 1" dome tweeter. The WX302/O is specifically designed for outdoor use and lends itself to a variety of applications, ensuring true to nature, high fidelity reproduction of music and speech.

Available colours:



WX302/O



WX502

5" wall speaker 2-way

The WX502 is the 5 1/4" version of the series fitted with a 1" dome tweeter. The elegant shaped synthetic enclosure is available in two different colors (black & white), making it blend into any environment.

Available colours:



WX502/O



WX802

8" wall speaker 2-way

The WX802 is the most muscular version of the series with a 8" low frequency loudspeaker and a 1" dome tweeter. This combination ensures a solution for a large number of outdoor applications.

Available colours:



WX802/O



Diocletian

Split, Croatia

Diocletian's Palace is an ancient palace in the city of Split Croatia, built by the Roman emperor Diocletian at the turn of the fourth century AD. Diocletian built the massive palace in preparation for his retirement on 1 May 305 AD. It lies in a bay on the south side of a short peninsula running out from the Dalmatian coast, four miles from Salona, the capital of the Roman province of Dalmatia. Within these ancient walls you can find the famous Diocletian restaurant which has been equipped with more than 20 WX502's from AUDAC. The complete system is powered by AUDAC's DPA series while the PRE26 preamplifier makes sure that volume above and below can be set to the requested level.





Melt pizzeria

Adelaide, Australia

The team responsible for some of Adelaide's best drinking and dining venues have opened their third Melt Pizzeria restaurant and bar at Henley Beach, a seaside suburb, less than 10 kilometers from Adelaide's city centre.

With a seating capacity of around 200 people, Melt Pizzeria features multiple indoor and outdoor spaces. Bifold windows and doors down one side of the building allows the spaces to flow together and provides the perfect spot to sit back with a glass of wine and look out over the ocean.

Micah Taylor, owner of M Higher Fidelity is the go-to man in Adelaide's hospitality scene and having worked on the owners' other venues around town, was quickly enlisted to provide a top-notch audio solution for the entire space.

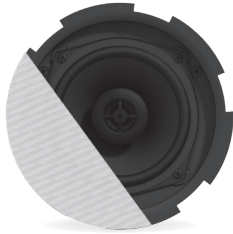
In collaboration with our Australian distributor Audio Logistics, Micah decided to install a combination of ATEO2 compact wall speakers, CELO2 and CELO8 high-end ceiling speakers and MERO high-end in-wall speakers from AUDAC throughout the indoor areas, providing high-end audio reproduction from compact, low-profile speakers which seem to disappear into the interior design of the spaces. A pair of BASO12 bass reflex cabinets 12" subwoofers extend the low-frequency capabilities of the system.

Outside, a combination of WX802_O and WX502_O outdoor wall speakers are able to stand up to the harsh conditions of the seaside location whilst ensuring that outdoor customers are not left in silence. As the venue is made up of many separate spaces, an MTX88 8-zone audio matrix was a necessity to allow each area to be fine-tuned to the optimum listening level, no matter what time of the day or night it is.



QuickFit™ ceiling speakers

AUDAC's high-quality in-ceiling speakers deliver exceptional sound quality and value for a wide variation of applications, ranging from paging and announcements to background music systems in a wide range of business applications, including hotels, restaurants and pubs, corporate offices, retail stores, etc. The ceiling mounting of all these speakers can be achieved with a QuickFit™ mechanism, offering great installers convenience and lifetime stability.



CIRA5

Quickfit™ 2-way 5 ¼" ceiling speaker with TwistFix™ grill

The CIRA5 features a 5 ¼" driver using polypropylene cone material, combined with a 1" Mylar tweeter fitted with a phase plug for excellent off axis performance. A continuous power handling of 30 Watt (RMS) and maximum power handling of 60 Watt is achieved, while fitted with a multi-tapping 100V line transformer with tapings for 6W, 3W, 1.5W and an 8 Ohm or 16 Ohm bypass connection.

Available models: CIRA506, CIRA524 and CIRA530D



Available colours:



CIRA7

Quickfit™ 2-way 6.5" ceiling speaker with TwistFix™ grill

The CIRA7 is a 2-way coaxial ceiling mount loudspeaker with a 6.5" low frequency driver. The CIRA7 is especially designed to offer an unmatched solution for a wide range of business applications, including hotels, restaurants and pubs, corporate offices, retail stores, etc.

Available models: CIRA724 and CIRA730D



Available colours:



CIRA8

Quickfit™ 2-way 8" ceiling speaker with TwistFix™ grill

The CIRA8 is the most muscular version of the series with a 8" driver using polypropylene cone material combined with a 1" Mylar tweeter. The selected materials guarantee a low distortion performance with smooth and flat frequency response.

Available models: CIRA824 and CIRA840D



Available colours:





Pazuzu Club

Corfu, Greece

One of the most popular beaches on the island Corfu is Glyfada. Located 16 km west of Corfu Town it is home to many watersport facilities, shops and clubs. The Pazuzu Club is one of the most important clubs on the island. Because of AUDAC's wide range of outdoor loudspeakers, the choice was obvious to the owners.

This unique environment faced some challenges during the design. Not only did the speakers have to be resistant to extreme weather conditions and salt exposure on the beach, the club also needed to provide an impressive sound experience to visitors in and around the club. In order to create the right atmosphere, a combination of WX802/OB, WX502/OB and WX302/OB 2-way loudspeakers were installed, together with complementary BASO12 compact 12" bass reflex bass cabinets. To cover the large beach area, HS212MK2 horn loaded 2-way loudspeakers are mounted on top of the terrace.

For the amplification they chose a COM12MK2 public address amplifier for the 100V lines while the larger system was powered by a combination of SMA350, SMA500 and SMQ350 WaveDynamics™ power amplifiers. Thanks to the WaveDynamics™ dsp processing inside the amplifiers, the installer was able to load the exact preset for each loudspeaker enabling the most accurate speaker protection and acoustical optimization for this application.



Full-range wall speakers

The XENO series is a loudspeaker range specifically designed for fixed audio installations in modern environments, offering two different sizes of contemporary and elegantly designed products.

What makes them so unique is their full-range audio design, allowing them to be used without additional bass cabinet.

The exceptional accuracy and clarity coming from the VEXO8 is recommended to be extended with a complementary bass cabinet adding the punchy and deep bass, resulting in a stunning sound over the entire frequency range.



XENO6

6" Full-range loudspeaker cabinet - 2-way

The XENO6 is the 6" version, featuring a 1" dome tweeter and a 6" Mid / Low frequency driver, ensuring a high-fidelity sound. This wooden cabinet is fitted with a slim and elegant front grill.

160W

8 Ohm

Available colours:



XENO8

8" Full-range loudspeaker cabinet - 2-way

The XENO8 is the 8" version, with a 1" dome tweeter and a 8" Mid / Low frequency driver, ensuring a true-to-nature, high-fidelity reproduction of music and speech. This wooden cabinet is fitted with a slim and elegant front grill.

240W

8 Ohm

Available colours:



VEXO8

8" High-power loudspeaker cabinet - 2-way

The VEXO8 is a high-output loudspeaker cabinet, featuring a 8" high efficiency Mid / Low range driver and 1" compression driver fitted with a 100° x 80° coverage horn, providing a powerful and detailed sound in a compact cabinet.

350W

8 Ohm

Available colours:





Zaal 4

Wijchen, The Netherlands

Near the marketplace of the Dutch little town of Wijchen the AUDAC Certified Partner AVplus installed and programmed a complete audio installation for a cozy bar & restaurant called "Zaal 4".

Build out of an old cinema complex that only ever had 3 theater rooms, this new bar & restaurant concept appropriately got the name Zaal 4 (which means the 4th theater room). It even has the original projector from 1912 and a lot of the other references to its old occupation, turning the establishment into a place with a very own and unique character. As it is the case with every complete concept; audio forms one of the most prominent elements in setting the right atmosphere.

With the location being used as grand café, restaurant but also as lounge bar and party venue, the choice for the right audio system wasn't an unimportant issue. After consultation with the owners of the complex, AVplus chose to go for our PRE126 user-friendly pre-amplifier. With this 6-channel sound mixer the 2 levels of the hospitality business (restaurant, lounge / party area) can be controlled separately for an optimal adjustment. An ultimate dispersion of sound is generated with a whopping amount of 14 VEXO8 compact high-power speakers and 4 BASO 15 bass reflex cabinets. The tight speaker design perfectly matches the retro cinematic atmosphere and above all this place won't fall short of sound! The whole speaker system is powered by only three SMQ750 amplifiers that are capable of delivering sufficient power to all wall speakers and the bass cabinets at the same time.

"Another advantage of this set-up is the fact that a band or dj when playing in the weekends or at an event in one of the party rooms, can very easily connect to the system due to the strategically installed XLR connection plates." says Tom Hijmans, installer at AVplus. Our partner AVplus explicitly let us know that the hosts of Zaal 4 were amazed with the sound quality and are delighted about their new sound system.

Photography: © Multibeeld.nl 2016





PRE26
AUDAC

PRE26
AUDAC

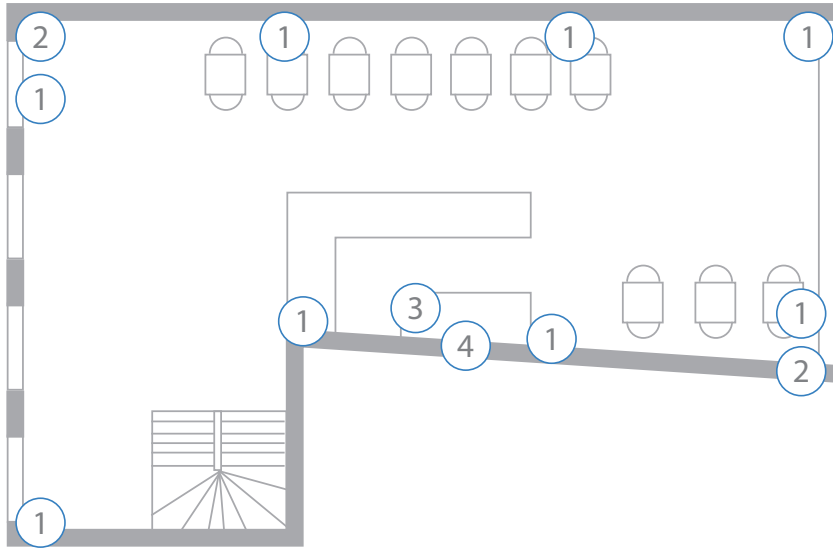
SMO750
AUDAC

SMO750
AUDAC

SMO750
AUDAC







- ① VEXO speakers
- ② BASO15 bass cabinets
- ③ PRE126 with SMQ750 amplifiers: The heart of the sound installation
- ④ CF45D wall panel for full audio control



Restaurant Dia

Kaunas, Lithuania

In the sprawling city of Kaunas (Lithuania) you will find one of the best local restaurants called DIA: a creative and tasty restaurant where they serve excellent food.

This popular restaurant is equipped with AUDAC XENO8 full range speakers that blend in beautifully with the modern and cozy interior design.

Thanks to the two zone 6-channel preamplifier PRE26 and the DPA154 quad channel class-D amplifiers, the staff can easily adjust and control the sound settings in two different areas.



Compact bass cabinets

NOBA is characterized by an innovative & unique design. With its curved shape, made of 4 mm thick aircraft graded aluminum and its extremely powerful 8" woofer of 300 Watts, the NOBA is able to deliver an unheard low frequency response for its small woofer size.

The perfect acoustic experience is guaranteed when the entire audio frequency spectrum is equally distributed. The slick look of the NOBA allows it to be placed against a wall, on the ceiling or even underneath furniture, yet due to the unique composition of its parts, NOBA ensures a much better spreading of sound waves than other similar cabinets. NOBA's integrated class-D amplifier provides an impressive clarity of 150 Watts for both of the top speaker outputs to ensure impeccable sound division.

The brand new bass cabinet uses AUDAC's WaveDynamics™ technology, which allows the user to easily set up the optimal acoustic configuration. The user can simply load its preferred audio settings through NOBA's integrated USB input.



NOBA8

Passive 8" bass reflex cabinet

The NOBA8 is a compact 8" bass cabinet which is characterized by an innovative & unique design. With its curved shape, made of 4 mm thick aircraft graded aluminum and its extremely powerful 8" woofer of 200 Watts, the NOBA8 is able to deliver an unheard low frequency response for its small woofer size. The perfect acoustic experience is guaranteed when the entire audio frequency spectrum is equally distributed.

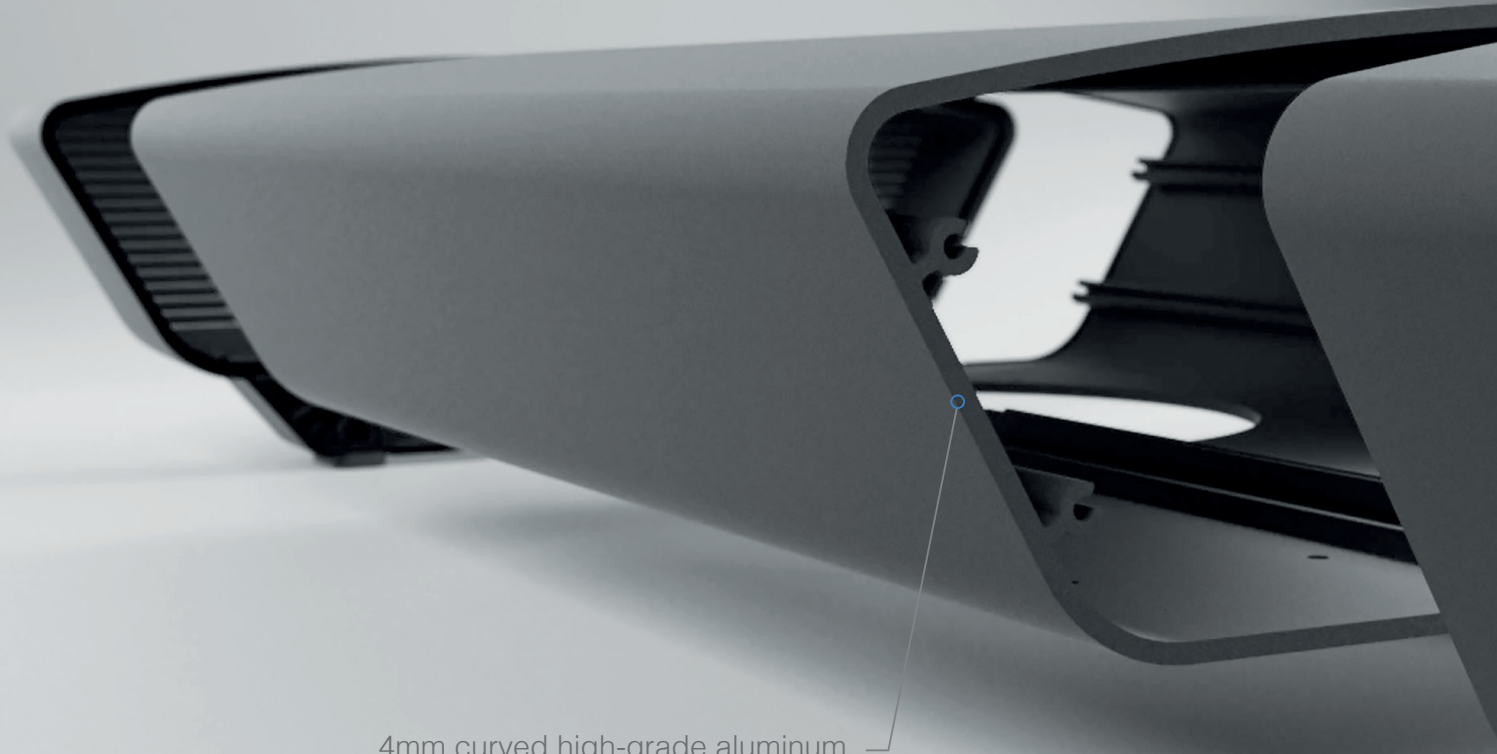
200W Available colours:
/B /W

NOBA8A

Active 8" bass reflex cabinet

The NOBA8A is a compact 8" active bass cabinet which can be recognized by her slick look. The extremely powerful 8" woofer of 300 Watts in combination with the 4mm thick aircraft graded aluminum housing produces an unheard low frequency response. NOBA8A's integrated class-D amplifier provides an impressive clarity of 150 Watts for both of the top speaker outputs to ensure impeccable sound division.

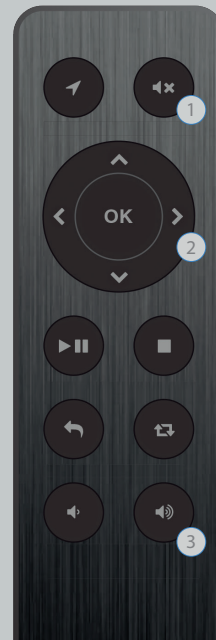
300W Available colours:
/B /W



4mm curved high-grade aluminum

Full control from the tip of your finger

- ① Mute switch
- ② Audio balance control
- ③ Volume control





Bass cabinets

The BASO cabinets are universally usable passive bass cabinets. Their bass reflex design is engineered to be as compact as possible while giving the maximum performance in terms of sound quality and pressure. Their enclosures are made of sturdy high-quality plywood while their elegant design enables them to be placed in any environment.



BASO10

10" Compact bass reflex cabinet

The BASO10 is loaded with a 10" high-performance woofer with an RMS power rating of 225 Watt and maximum power of 450 Watt. The strength of this loudspeaker originates from a four layer wound 1.5" voice coil in combination with an over-sized ferrite type magnet which provides an unusual high force factor. In combination with the low-loss suspension, this results in a linear behavior with high efficiency and extremely wide frequency range.

450W

8 Ohm

Available colours:





BASO12

12" Compact bass reflex cabinet

The BASO12 is loaded with a 12" high-performance woofer with an RMS power rating of 500 Watt and maximum power of 1000 Watt. The strength of this loudspeaker originates from a 4" voice coil which is allowed to perform extra long excursions. Displacements are precisely controlled by the dual low-loss suspension resulting in a superior linear behavior.

1000W

8 Ohm

Available colours:



BASO15

15" Compact bass reflex cabinet

The BASO15 is loaded with a 15" high-performance woofer with an RMS power rating of 700 Watt and maximum power of 1400 Watt. The strength of this loudspeaker originates from a 4" voice coil which is allowed to perform extra long excursions. Displacements are precisely controlled by the dual low-loss suspension resulting in a superior linear behavior.

1400W

8 Ohm

Available colours:



BASO18

18" Compact bass reflex cabinet

The BASO18 is loaded with a 18" high-performance woofer with an RMS power rating of 900 Watt and maximum power of 1800 Watt. The strength of this loudspeaker originates from a 4" voice coil which is allowed to perform extra long excursions. Displacements are precisely controlled by the dual low-loss suspension resulting in a superior linear behavior.

1800W

8 Ohm

Available colours:







Barrock

Bratislava, Slovakia

Within walking distance of the Danube river in Bratislava, a popular rock café lures metal heads and music enthusiasts into its pit of loud music, liquor and late-night entertainment. Due to the massive success with locals as well as tourists, the manager has chosen to expand his venue, this led to improvements that also needed to be done to its sound facilities. To serve all the thirsty party people, three bars are placed to ensure an optimal service, yet this also implied the need of three different audio systems.

These systems used to be linked with a series of long signal cables, often resulting in too many ground loop problems and unwanted noise from the speakers. To resolve these issues a tough nut needed to be cracked by the engineers of G-TEC.

By using the AUDAC MTX88 audio matrix in combination with WLI20 wall inputs the engineers found a solution that could safely transfer the audio signals from the jukebox or Dj's setup to the matrix without any interference or sound loss. A set of BASO10's provide maximum bass in terms of sound quality and pressure.



BARS AND RESTAURANTS



SPORTING FACILITIES



RETAIL



RESIDENTIAL



HOUSES OF WORSHIP



HOTELS



GOVERNMENT FACILITIES



EVENTS



EDUCATION



CORPORATE



CONCERT VENUES



CLUBS

Looking for the right audio solution for your project?
Visit audac.eu/audio-configurator.

YOUR AUDAC PARTNER

