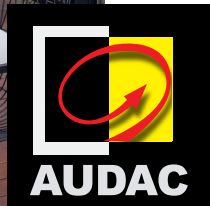




Your audio solution,
our passion





AUDAC Set Solutions

AUDAC is the Belgian brand that specializes in professional quality audio solutions.

The brand is well-known for designing inspiring and innovative products for the audio market for over 25 years.

Inside this catalog, AUDAC's audio engineers help you choose between AUDAC's most innovating acoustic solutions.

In addition to the handy 'speech' and 'music' indication logos, you will also find an indication of the area that the audio solution will cover. Together with the application examples, these elements will provide you with an accurate idea of which solution will work best.

Are you still struggling to find a solution or are you perhaps looking for a more extensive or elaborate audio system? Do not hesitate to contact us at info@audac.eu.

Visit audac.eu/setolutions for a complete overview of all set solutions.

Legend



Speech level (1-4)



Music level (1-4)



Recommended area coverage



Humidity resistant



Max power



High impedance



Low impedance

Content

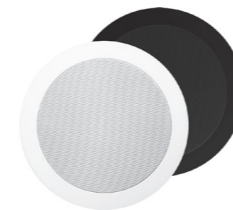
In-ceiling speakers	6	Compact wall speakers	40
High-end in-ceiling speakers	12	Full range wall speakers	54
High-end in-wall speakers	24	High-power wall speakers	60
Column speakers	30	High-output speaker system	68
Bass cabinets	32	Outdoor speakers	72



In-ceiling speakers

The CS series are elegant in-ceiling loudspeakers made of high-quality components ensuring a detailed and warm sound reproduction of music as well as speech.

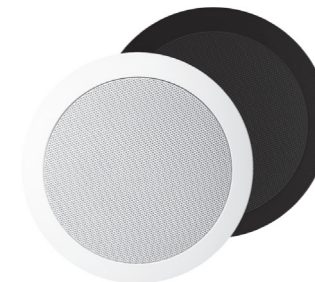
Showing only a few models inside this catalog, this range has the most versatile ceiling speakers AUDAC has to offer. Thanks to their unique construction and DuraWeather™ coating, they are suitable for a very wide range of applications.



CS55

Quick-Fit dual cone in-ceiling speaker

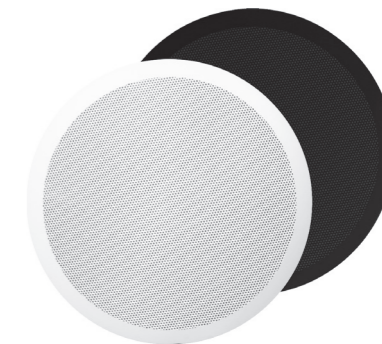
The CS55 is a professional dual cone loudspeaker with a 5 1/4" driver which is capable of producing a power up to 10 Watt RMS, with a maximum of 20 Watt.



CS75

Quick-Fit 2-way in-ceiling speaker

The CS75 is a 2-way high-quality loudspeaker with a 5 1/4" driver for the low frequencies and 1" coaxial tweeter mounted in the center. It is capable of producing up to 30 Watt RMS, with a maximum of 60 Watt.



CS85

Quick-Fit 2-way in-ceiling speaker

The CS85 is a 2-way extremely high-quality loudspeaker with a 8" driver for the low frequencies and 1" coaxial tweeter mounted in the center. It is capable of producing up to 40 Watt RMS, with a maximum of 80 Watt.



AGRO5.4

4 x CS55 + COM3

The AGRO5.4 set is composed of CS55 dual cone 5 1/4" in-ceiling loudspeakers providing a clear and intelligible sound, suited for versatile 100 Volt background music and announcement systems.

Powered by a COM3 amplifier, great flexibility for connecting sources and microphones is offered. This system, using four CS55 speakers, can cover areas of around 60 m².

Features

- Easy-to-use
- Versatile solution
- Connection flexibility
- Cost-effective

Applications

Bars, Restaurants, Retail, Education, Hotels, Public facilities, Corporate spaces.

Available colours: **B** **W**



AGRO7.10

10 x CS75 + COM12MK2

The AGRO7.10 set is composed of CS75 two-way 5 1/4" in-ceiling loudspeakers providing a high-quality and intelligible sound, suited for high-quality 100 Volt background music and announcement systems.

Powered by a COM12MK2 amplifier, great flexibility for connecting sources and microphones is offered. This system, using ten CS75 speakers, can cover areas of around 120 m².

Features

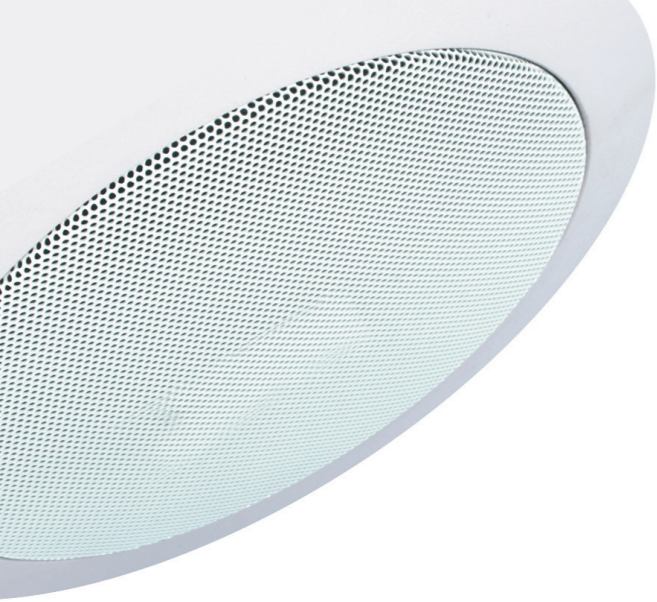
- Easy-to-use
- High-quality sound
- Versatile solution
- Connection flexibility

Applications

Bars, Restaurants, Retail, Education, Hotels, Public facilities, Corporate spaces.

Available colours: **B** **W**





AGRO8.16

16 x CS85 + COM24MK2

The AGRO8.16 set is composed of CS85 two-way 8" in-ceiling loudspeakers providing a powerful and high-fidelity sound quality, suited for highly demanding 100 Volt background music and announcement systems.

Powered by a COM24MK2 amplifier, a great flexibility for connecting sources and microphones is offered. This system, using sixteen CS85 speakers, can cover areas of around 200 m².

Features

- Easy-to-use
- High-fidelity sound
- Versatile solution
- Connection flexibility

Applications

Bars, Restaurants, Retail, Education, Hotels, Public facilities, Corporate spaces.

Available colours:  





High-end in-ceiling speakers

The CELO series is AUDAC's high-end slim in-ceiling speaker series, consisting of four models which guarantee an optimal experience for every situation and application.



CELO2

2" High-end slim in-ceiling speaker

The ultra-compact size enables the CELO2 to smoothly integrate into any interior like no other loudspeaker. The 2" full-range aluminum cone driver is fitted in a ported enclosure with closed backcan. This way, a clear and crisp sound is guaranteed with an improved response in the low frequencies.

20W 8 Ohm 18 Ohm Available colours: /B /W
CELO2D



CELO5

5" High-end slim in-ceiling speaker

The uncompromised design of the CELO5 results in the ideal match between quality and size. It produces a stunning sound which is extremely detailed and clear. The two-way construction consisting of a 5" aluminum cone woofer and a complementary 1" dome tweeter are smoothly matched using a high-quality crossover network.

100W 8 Ohm Available colours: /B /W



CELO6

6" High-end slim in-ceiling speaker

The perfect match for a large number of applications is realised with the CELO6 loudspeaker. This loudspeaker consists of a 6" aluminum cone woofer with a complementary 1" dome tweeter. This combination guarantees the perfect harmony and balance of sound, allowing you to accurately distinguish each element of your favourite songs.

120W 8 Ohm Available colours: /B /W



CELO8

8" High-end slim in-ceiling speaker

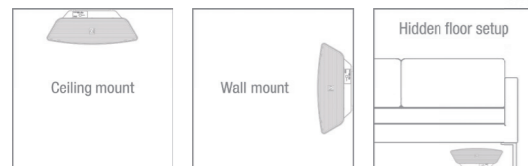
The most powerful of its kind is the CELO8 loudspeaker, which is constructed using a 8" aluminum cone woofer and a complementary 1" dome tweeter. This combination allows the loudspeaker to reach lower frequencies which results in a high-fidelity sound with powerful and detailing low frequencies, unheard of in its class.

160W 8 Ohm Available colours: /B /W

Compact bass cabinet

NOBA is characterized by an innovative & unique design. With its curved shape, made of 4 mm thick aircraft graded aluminum and its extremely powerful 8" woofer of 300 Watts, the NOBA is able to deliver an unheard low frequency response for its small woofer size.

The perfect acoustic experience is guaranteed when the entire audio frequency spectrum is equally distributed. The slick look of the NOBA allows it to be placed against a wall, on the ceiling or even underneath furniture, yet due to the unique composition of its parts, NOBA ensures a much better spreading of sound waves than other similar cabinets. NOBA's integrated class-D amplifier provides an impressive clarity of 150 Watts for both of the top speaker outputs to ensure impeccable sound division.



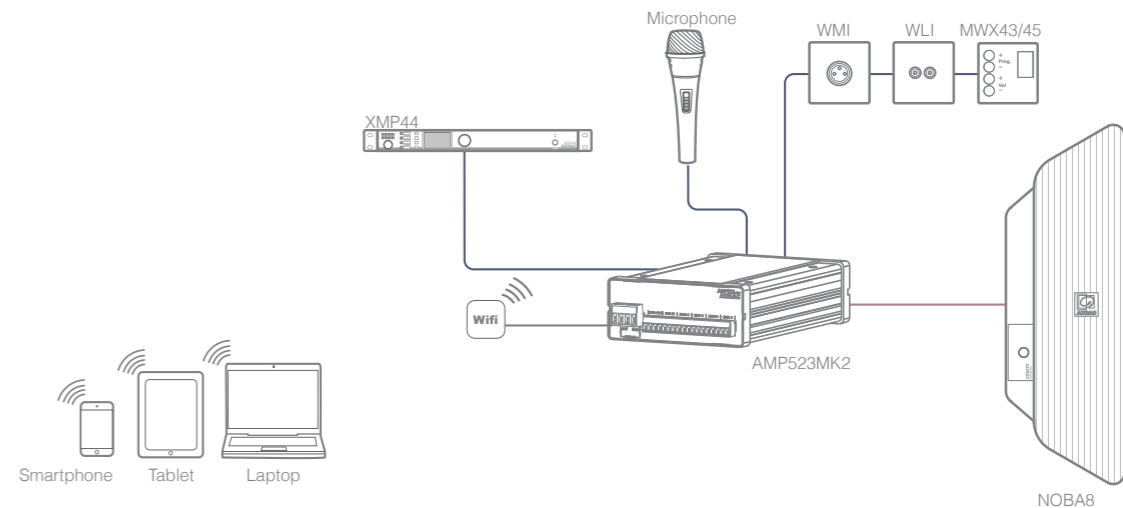
- 1 WaveDynamics™ DSP and loudspeaker management
- 2 600 Watts Class-D Power amplifier
- 3 USB connection for preset loading & control
- 4 Satellite amplifier for set solutions (2.1)
- 5 Software configurable standby function (energy-star)
- 6 Wide operation range switch mode power supply with power factor correction





Get even more out of the NOBA solutions

All great NOBA solutions are available in a + version, these are accompanied with a AMP523MKII module. This extra module will increase the amount of inputs for the audio system and open new control possibilities. Advanced remote control over the system is now possible while using any computer browser or applying the freely available AUDAC Touch™ application for smart devices. While optional wall panels can increase the existing microphone and 4 line inputs to an extra line or microphone input or a control panel can select the desired audio source and volume.



SENSO2.4

4 x CELO2 + AMP20MK2

The tiny and nearly invisible design of the CELO2 speakers makes the SENSO2.4 set one of the most compact high-end in-ceiling audio solutions that will draw your attention only through its extraordinary sound.

Powered by the AMP20MK2 mini stereo amplifier, this set enables total integration of the system without any noticeable parts. This system, using four CELO2 loudspeakers, can cover areas of around 60 m² with background music.

Features

- Near-invisible design
- High-end sound
- Energy-efficient
- Optional remote source inputs and volume controller

Applications

Residential, Bars, Restaurants, Retail, Education, Hotels, Public facilities, Corporate spaces.

Available colours: **/B** **/W**



WP523
(optional wall panel)



VC3208
(optional wall panel)



SENSO2.8E

8 x CELO2D + EPA152

The tiny and nearly invisible design of the CELO2D speakers makes the SENSO2.8E set one of the most compact high-end in-ceiling audio solutions that will draw your attention only through its extraordinary sound.

Powered by an EPA152 Class-D amplifier, this system, using eight CELO2D loudspeakers, can cover areas of around 120 m² with a warm and true-to-nature sound.

Features

- Near-invisible design
- High-end sound
- High-efficiency Class-D amplifier

Applications

Residential, Bars, Restaurants, Retail, Education, Hotels, Government facilities, Corporate spaces.

Available colours: **/B** **/W**



SENSO2.5

4 x CELO2 + NOBA8A

The ultra-compact size of the CELO2 can smoothly integrate into any interior. Combined with the stealth design and rich sound of the powerful 8" NOBA cabinet, it will assure a sound distribution that is unheard of for its size.

The NOBA8A is integrated with an amplifier that delivers powers for itself and the CELO satellite speakers. This system, using four CELO2 loudspeakers, can cover areas of around 60 m² with background music.

Features

- Innovative & unique design
- High-end sound
- Energy-efficient
- Integrated class-D amplifier

Applications

Residential, Bars, Restaurants, Retail, Education, Hotels, Government facilities, Corporate spaces, Clubs.

Available colours:  

Also available as +version : SENSO2.5+



SENSO2.9

8 x CELO2D + NOBA8A

The ultra-compact size of the CELO2D can smoothly integrate into any interior. Combined with the stealth design and rich sound of the powerful 8" NOBA cabinet, it will assure a sound distribution that is unheard of for its size.

The NOBA8A is integrated with an amplifier that delivers powers for itself and the CELO satellite speakers. This system, using eight CELO2D loudspeakers, can cover areas of around 130 m² with background music.

Features

- Innovative & unique design
- High-end sound
- Energy-efficient
- Integrated class-D amplifier

Applications

Residential, Bars, Restaurants, Retail, Education, Hotels, Government facilities, Corporate spaces, Clubs.

Available colours:  

Also available as +version : SENSO2.9+



SENSO5.4E

4 x CELO5 + EPA152

Thanks to the elegant and nearly invisible design of the CELO5 speakers, the SENSO5.4E set will aesthetically blend into any environment while guaranteeing an unsurpassed sound experience.

Powered by an EPA152 Class-D amplifier, this system, using four CELO5 loudspeakers, can cover areas of around 60 m² with a warm and true-to-nature sound.

Features

- Discreet design
- High-efficiency Class-D amplifier
- Warm and true-to-nature sound

Applications

Residential, Bars, Restaurants, Retail, Education, Hotels, Public facilities, Corporate spaces.

Available colours:  



SENSO6.8E

8 x CELO6 + EPA104

Thanks to the elegant and nearly invisible design of the CELO6 speakers, the SENSO6.8E set will aesthetically blend into any environment while guaranteeing an unsurpassed sound experience.

Powered by an EPA104 Class-D amplifier, this system, using eight CELO6 loudspeakers, can cover areas of around 120 m² with high-fidelity sound.

Features

- Discreet design
- High-fidelity sound
- High-efficiency Class-D amplifier

Applications

Residential, Bars, Restaurants, Retail, Education, Hotels, Public facilities, Corporate spaces.

Available colours:  





High-end in-wall speakers

The selection of high-grade materials in combination with accurate acoustics craftsmanship makes the MERO speakers superior in their class.

An elegant look with minimal visual impact is created by the slim grill with very thin border, while great ease and installers convenience is guaranteed using the quick-fix mechanism with Gold-Con™ connectivities. The grill is held in place using neodymium magnets, providing a quick and stable assembly. Installation can be done vertically and horizontally, while the rotatable tweeter allows optimal orientation positioning.



MERO2

2" High-end slim in-wall speaker

The ultra-compact size enables the MERO2 to smoothly integrate into any interior like no other loudspeaker. The outer dimensions which measure only 106 x 152 mm and the built-in depth which doesn't exceed 66 mm allows installation in any location and into any surface without being obtrusive.



MERO5

5" High-end slim in-wall speaker

The medium sized MERO5 consists of a 5" aluminum cone woofer and a complementary 1" dome tweeter that are smoothly matched and optimized using a high-quality crossover network.



MERO6

6" High-end slim in-wall speaker

The largest MERO6 consists of a 6" aluminum cone woofer and a complementary 1" dome tweeter that are smoothly matched and optimized using a high-quality crossover network.



CERRA2.3

2 x MERO2 + NOBA8A

Thanks to the elegant and nearly invisible design of the MERO speakers, the CERRA2.3 set will aesthetically blend into any environment while guaranteeing an unsurpassed sound experience.

Accompanied and powered by the NOBA8A bass cabinet, this set will deliver a warm full range Hi-fi audio reproduction of music and speech. The system, using two MERO2 loudspeakers, can cover areas of around 30 m² with clear and powerful background music.

Features

- Innovative & unique design
- High-end sound
- Energy-efficient
- Integrated class-D amplifier

Applications

Residential, Bars, Restaurants, Retail, Education, Corporate spaces, Clubs.

Available colours:  

Also available as +version : CERRA2.3+



CERRA6.2E

2 x MERO6 + EPA152

Thanks to the elegant and nearly invisible design of the MERO speakers, the CERRA6.2E set will aesthetically blend into any environment while guaranteeing an unsurpassed sound experience.

Powered by an EPA152 Class-D amplifier, this system using two MERO6 loudspeakers, can cover areas of around 30 m² with high-fidelity sound.

Features

- Discreet design
- High-fidelity sound
- High-efficiency Class-D amplifier

Applications

Residential, Bars, Restaurants, Retail, Education, Corporate spaces.

Available colours:  



CERRA2.5+

4 x MERO2 + NOBA8A + AMP523MK2

Thanks to the elegant and nearly invisible design of the MERO speakers, the CERRA2.5+ set will aesthetically blend into any environment while guaranteeing an unsurpassed sound experience. Accompanied and powered by the NOBA8A bass cabinet, this set will deliver a warm full range hi-fi audio reproduction of music and speech. The system, using four MERO2 loudspeakers, can cover areas of around 60 m² with clear and powerful background music.

The addition of an AMP523MK2 will increase the amount of inputs and open the possibility to control volume and input selection through a web browser or with the AUDAC Touch™ mobile application.

Features

- Innovative & unique design
- High-end sound
- Energy-efficient
- Integrated class-D amplifier

Applications

Residential, Bars and restaurants, Retail, Education, Corporate

Available colours:  



CERRA2.9+

8 x MERO2D + NOBA8A + AMP523MK2

Thanks to the elegant and nearly invisible design of the MERO speakers, the CERRA2.9+ set will aesthetically blend into any environment while guaranteeing an unsurpassed sound experience. Accompanied and powered by the NOBA8A bass cabinet, this set will deliver a warm full range hi-fi audio reproduction of music and speech. The system, using eight MERO2D loudspeakers, can cover areas of around 120 m² with clear and powerful background music.

The addition of an AMP523MK2 will increase the amount of inputs and open the possibility to control volume and input selection through a web browser or with the AUDAC Touch™ mobile application.

Features

- Innovative & unique design
- High-end sound
- Energy-efficient
- Integrated class-D amplifier

Applications

Residential, Bars & restaurants, Retail, Education, Corporate spaces.

Available colours:  





Column speakers

AUDAC's column loudspeaker range is the elegant result of several decades of development in phased array acoustics. The purpose of these loudspeakers is not only covering long distances but also achieving high sound directivity, reducing unwanted acoustic reverberation to a strict minimum.



KYDO
Design column speaker

The KYDO Design column speaker is constructed using 6 x 2" broadband loudspeakers, providing an extraordinary sound quality with surprisingly high sound pressure levels. This results in an excellent audibility of music and speech in acoustically difficult environments with small to medium coverage distances (up to 8 m).

120W 12 Ohm Available colours: /B /W



AXIR
Design column speaker

The AXIR Design column speaker is constructed using 12 x 2" broadband loudspeakers, providing an extraordinary sound quality with surprisingly high sound pressure levels. This results in an excellent audibility of music and speech in acoustically difficult environments with medium to large coverage distances (up to 16 m).

240W 6 Ohm Available colours: /B /W



GIAX
Design column speaker

The GIAX Design column speaker is constructed using 24 x 2" broadband loudspeakers, providing an extraordinary sound quality with surprisingly high sound pressure levels. This results in an excellent audibility of music and speech in acoustically difficult environments with very large coverage distances (up to 32 m).

480W 4 Ohm Available colours: /B /W



Bass cabinets

The BASO cabinets are universally usable passive bass cabinets. Their bass reflex design is engineered to be as compact as possible while giving the maximum performance in terms of sound quality and pressure. Their enclosures are made of sturdy high-quality plywood while their elegant design enables them to be placed in any environment.



BASO10
10" Compact bass reflex cabinet

The BASO10 is loaded with a 10" high-performance woofer with an RMS power rating of 225 Watt and maximum power of 450 Watt. The strength of this loudspeaker originates from a four layer wound 1.5" voice coil in combination with an over-sized ferrite type magnet which provides an unusual high force factor. In combination with the low-loss suspension, this results in a linear behavior with high efficiency and extremely wide frequency range.

450W 8 Ohm Available colours:
/B /W



BASO12
12" Compact bass reflex cabinet

The BASO12 is loaded with a 12" high-performance woofer with an RMS power rating of 500 Watt and maximum power of 1000 Watt. The strength of this loudspeaker originates from a 4" voice coil which is allowed to perform extra long excursions. Displacements are precisely controlled by the dual low-loss suspension resulting in a superior linear behavior.

1000W 8 Ohm Available colours:
/B /W



BASO15
15" Compact bass reflex cabinet

The BASO15 is loaded with a 15" high-performance woofer with an RMS power rating of 700 Watt and maximum power of 1400 Watt. The strength of this loudspeaker originates from a 4" voice coil which is allowed to perform extra long excursions. Displacements are precisely controlled by the dual low-loss suspension resulting in a superior linear behavior.

1400W 8 Ohm Available colours:
/B /W



BASO18
18" Compact bass reflex cabinet

The BASO18 is loaded with a 18" high-performance woofer with an RMS power rating of 900 Watt and maximum power of 1800 Watt. The strength of this loudspeaker originates from a 4" voice coil which is allowed to perform extra long excursions. Displacements are precisely controlled by the dual low-loss suspension resulting in a superior linear behavior.

1800W 8 Ohm Available colours:
/B /W



WaveDynamics™ Amplifiers

The following audio solutions include AUDAC's WaveDynamics™ technology.

What are the benefits from this ?

- ▶ Sound optimization thanks to speaker presets
- ▶ Controllability, even with automation systems
- ▶ System protection
- ▶ Flexibility
- ▶ Efficiency



CONGRESS1.3

2 x KYDO + NOBA8A

When the intelligibility over a small to medium distance of speech and music is very important, the CONGRESS1.3 set featuring KYDO design column speakers and a stunning NOBA8A bass cabinet is the ideal solution.

The two column speakers and the bass speakers are power from the integrated Class-D power amplifier in the NOBA8A. The system, using two KYDO loudspeakers and a NOBA8A bass cabinet can cover areas of around 30 m² with intelligible speech and music, even in acoustically difficult environments.

Features

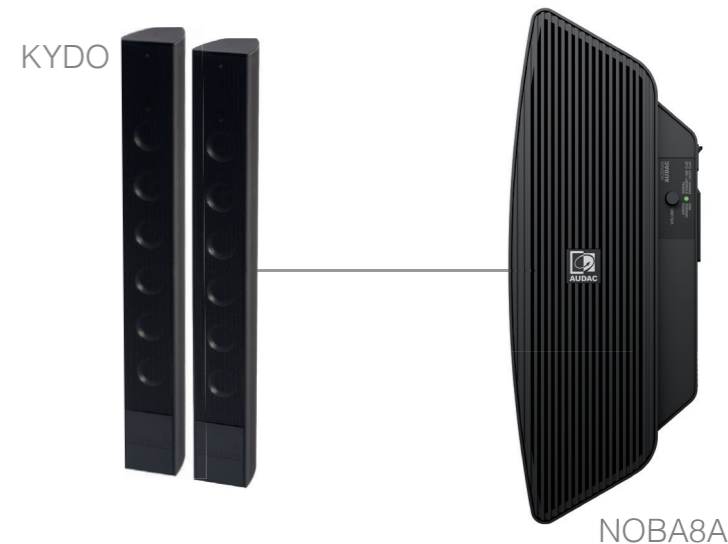
- ▶ Innovative & unique design
- ▶ Intelligibility over medium distances
- ▶ Integrated class-D amplifier
- ▶ Energy-efficient

Applications

Residential, Education, Corporate spaces, Houses of worship.

Available colours: **B** **W**

Also available as +version : CONGRESS1.3+



CONGRESS4.3

2 x AXIR + NOBA8A

When the intelligibility over a medium distance of speech and music is very important, the CONGRESS4.3 set featuring AXIR design column speakers and a stunning NOBA8A bass cabinet is the ideal solution.

The two column speakers and the bass speakers are powered from the integrated Class-D power amplifier in the NOBA8A. The system, using two AXIR loudspeakers and a NOBA8A bass cabinet can cover areas of around 60 m² with intelligible speech and music, even in acoustically difficult environments.

Features

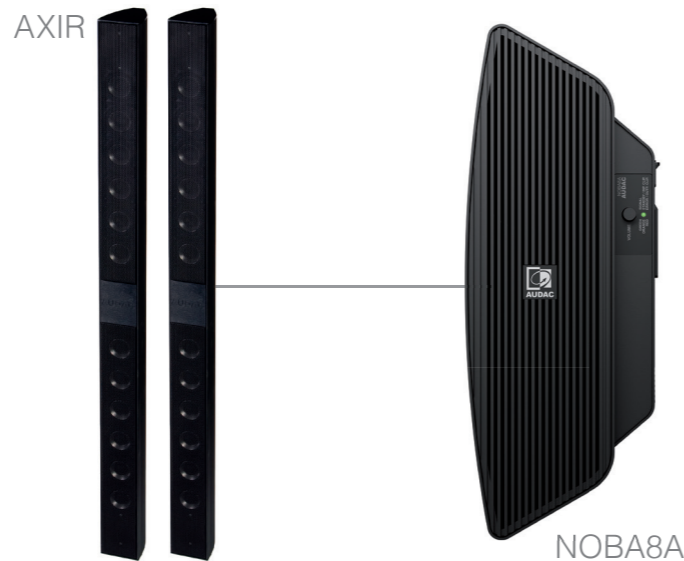
- Innovative & unique design
- Intelligibility over medium distances
- Integrated class-D amplifier
- Energy-efficient

Applications

Residential, Education, Corporate spaces, Houses of worship.

Available colours: B W

Also available as +version : CONGRESS4.3+



CONGRESS2.3E

2 x AXIR + BASO10 + EPA254

When the intelligibility over a medium distances of speech and music is very important, the CONGRESS2.3E set featuring AXIR design column speakers and a 10" BASO10 bass cabinet is the ideal solution.

Powered by an EPA254 Class-D power amplifier, this system, using two AXIR loudspeakers and a BASO10 bass cabinet can cover areas of around 60 m² with intelligible speech and music, even in acoustically difficult environments.

Features

- Elegant and slim design
- Intelligibility over medium distances
- High-efficiency Class-D amplifier

Applications

Education, Corporate spaces, Houses of worship, Public facilities.

Available colours: B W





CONGRESS3.3

2 x GIAX + 2 x BASO12 + SMQ500

When the intelligibility over a medium distances of speech and music is very important, the CONGRESS3.3 set featuring GIAX design column speakers and 12" BASO12 bass cabinets is the ideal solution.

Powered by a SMQ500 WaveDynamics™ Class-D power amplifier, this system, using two GIAX loudspeakers and BASO12 bass cabinets can cover areas of around 120 m² with intelligible speech and music, even in acoustically difficult environments.

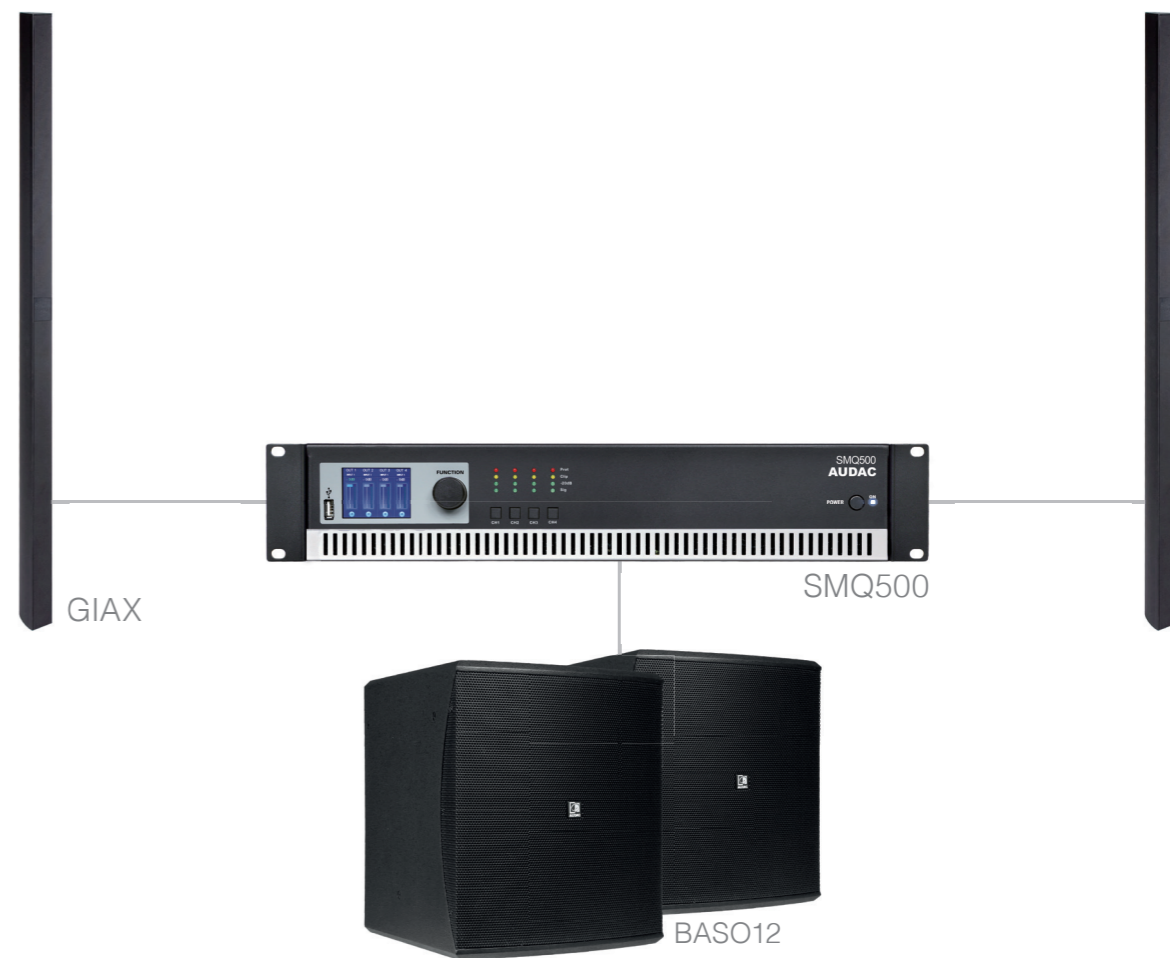
Features

- Elegant and slim design
- Intelligibility over large distances
- High-efficiency Class-D amplifier
- WaveDynamics™ technology
- True and impressive bass

Applications

Education, Corporate spaces, Houses of worship, Public facilities.

Available colours: /B /W





Compact wall speakers

The ATEO is a series of extraordinary loudspeakers specially designed for fixed installation indoor applications, ranging from modern residential applications to the most demanding designer applications in environments such as retail stores, pubs, restaurants or even clubs.



ATEO2
2" Wall speaker with
CleverMount™ bracket

The ATEO2 consists of a 2" full-range aluminum cone speaker guaranteeing a clear and crisp sound with minimal visual impact, fitted in an elegant and compact enclosure.

20W 8 Ohm 16 Ohm Available colours:
/B /W
ATEO2D



ATEO4
4" 2-Way Wall speaker with
CleverMount™ bracket

The ATEO4 is the 4" version, with a 1" dome tweeter and a 4" Mid / Low frequency driver, ensuring a true-to-nature, high-fidelity reproduction of music and speech.

70W 8 Ohm 100V Available colours:
/B /W



ATEO6
6" 2-Way Wall speaker with
CleverMount™ bracket

The ATEO6 is the 6" version, with a 1" dome tweeter and a 6" Mid / Low frequency driver, ensuring a true-to-nature, high-fidelity reproduction of music and speech.

120W 8 Ohm 100V Available colours:
/B /W

SUBLI2.5E

4 x ATEO2 + BASO10 + EPA104

Thanks to the combination of the extremely compact ATEO2 loudspeakers and a BASO10 bass cabinet you no longer need to worry about impressing your listener. This SUBLI2.5E solution allows you to produce crystal clear sound in any environment, guaranteeing an unsurpassable sound experience with elegant aesthetics

Powered by an EPA104 Class-D amplifier, this system, using four ATEO2 loudspeakers and a BASO10 bass cabinet can cover areas of around 60 m² with true-to-nature high-fidelity music and speech.

Features

- Impressive compact design
- CleverMount™ Installation
- High-efficiency Class-D amplifier
- Room-filling sound experience

Applications

Residential, Bars, Restaurants, Retail, Education, Hotels, Government facilities, Corporate.

Available colours: /B /W



SUBLI2.9E

8 x ATEO2D + BASO10 + EPA104

Thanks to the combination of the extremely compact ATEO2D loudspeakers and a BASO10 bass cabinet you no longer need to worry about impressing your listener. This SUBLI2.9E solution allows you to produce crystal clear sound in any environment, guaranteeing an unsurpassable sound experience with elegant aesthetics

Powered by an EPA104 Class-D amplifier, this system, using eight ATEO2D loudspeakers and a BASO10 bass cabinet can cover areas of around 120 m² with true-to-nature high-fidelity music and speech.

Features

- Impressive compact design
- CleverMount™ Installation
- High-efficiency Class-D amplifier
- Room-filling sound experience

Applications

Residential, Bars, Restaurants, Retail, Education, Hotels, Government facilities.

Available colours: /B /W



SONA2.3

2 x ATEO2 + NOBA8A

The SONA2.3 set provides a stunning and elegant design whilst delivering a sound experience that will leave its listeners stunned. Thanks to the combination of the extremely compact ATEO loudspeakers and the powerful NOBA bass cabinet of only 149mm thick, a perfect balance between sound clarity and power can be attained.

An excellent acoustical match is accomplished by the WaveDynamics™ technology which also provides a bulletproof protection for your audio system. This system, using two ATEO2 loudspeakers and a NOBA8A bass cabinet can cover areas of around 30 m² with clear and powerful background music.

Features

- Innovative & unique design
- High-end sound
- Energy-efficient
- Integrated class-D amplifier

Applications

Residential, Bars, Restaurants, Retail, Education, Hotels, Government facilities, Corporate spaces.

Available colours: **B** **W**

Also available as +version : SONA2.3+



SONA2.9

8 x ATEO2D + NOBA8A

The SONA2.9 set provides a stunning and elegant design whilst delivering a sound experience that will leave its listeners stunned. Thanks to the combination of the extremely compact ATEO loudspeakers and the powerful NOBA bass cabinet of only 149mm thick, a perfect balance between sound clarity and power can be attained.

An excellent acoustical match is accomplished by the WaveDynamics™ technology which also provides a bulletproof protection for your audio system. This system, using eight ATEO2D loudspeakers and a NOBA8A bass cabinet can cover areas of around 120 m² with clear and powerful background music.

Features

- Innovative & unique design
- High-end sound
- Energy-efficient
- Integrated class-D amplifier

Applications

Residential, Bars, Restaurants, Retail, Education, Hotels, Government facilities, Corporate spaces.

Available colours: **B** **W**

Also available as +version : SONA2.9+



FESTA4.3E

2 x ATEO4 + BASO10 + EPA104

The combination of the ATEO4 loudspeakers' stunning design and BASO10 bass cabinet, both featuring high-quality components, enables the FESTA4.3E set to be installed in any environment, guaranteeing an impressive sound with elegant aesthetics.

Powered by an EPA104 Class-D amplifier, this system, using two ATEO4 loudspeakers and a BASO10 bass cabinet can cover areas of around 30 m² with true-to-nature high-fidelity music and speech.

Features

- Elegant design
- CleverMount™ Installation
- High-efficiency Class-D amplifier
- Room-filling bass

Applications

Residential, Clubs, Bars, Restaurants, Retail, Sports facilities.

Available colours: /B /W



FESTA4.4E

4 x ATEO4 + EPA152

The combination of the ATEO4 loudspeakers' stunning design and high-quality components enables the FESTA4.4E set to be installed in any environment, guaranteeing a high-quality sound with elegant aesthetics.

Powered by an EPA152 Class-D amplifier, this system, using four ATEO4 loudspeakers, can cover areas of around 60 m² with true-to-nature high-fidelity music and speech.

Features

- Elegant design
- CleverMount™ installation
- High-quality sound
- High-efficiency Class-D amplifier

Applications

Residential, Clubs, Bars, Restaurants, Retail, Education, Hotels, Public facilities, Corporate spaces.

Available colours: /B /W



SONA4.5

4 x ATEO4 + NOBA8A

When a higher sound pressure is required, the NOBA8A has sufficient capacity to power two powerful ATEO4 wall speakers. With its stunning design and high-quality components, the ATEO4 will fit into the most demanding designer environments and deliver an extraordinary sound reproduction with the combination of the NOBA8A bass cabinet.

This system, using four ATEO4 loudspeakers and a NOBA8A bass cabinet can cover areas of around 60 m² with clear and powerful background music.

Features

- Innovative & unique design
- High-end sound
- Energy-efficient
- Integrated class-D amplifier

Applications

Residential, Bars, Restaurants, Retail, Education, Hotels, Government facilities, Corporate spaces.

Available colours: **B** **W**

Also available as +version : SONA4.5+



FESTA4.5E

4 x ATEO4 + BASO10 + EPA104

The combination of the ATEO4 loudspeakers' stunning design and BASO10 bass cabinet, both featuring high-quality components, enables the FESTA4.5E set to be installed in any environment, guaranteeing an impressive sound with elegant aesthetics.

Powered by an EPA104 Class-D amplifier, this system, using four ATEO4 loudspeakers and a BASO10 bass cabinet can cover areas of around 60 m² with true-nature high-fidelity music and speech.

Features

- Elegant design
- CleverMount™ Installation
- High-efficiency Class-D amplifier
- Room-filling bass

Applications

Residential, Clubs, Bars, Restaurants, Retail, Sports facilities.

Available colours:  



FESTA6.3E

2 x ATEO6 + BASO10 + EPA254

The combination of the ATEO6 loudspeakers' stunning design and BASO10 bass cabinet, both featuring high-quality components, enables the FESTA6.3E set to be installed in any environment, guaranteeing an impressive sound with elegant aesthetics.

Powered by an EPA254 Class-D power amplifier, this system, using two ATEO6 loudspeakers and a BASO10 bass cabinet can cover areas of around 60 m² with a warm and powerful sound.

Features

- Elegant design
- CleverMount™ Installation
- High-efficiency Class-D amplifier
- Room-filling bass

Applications

Residential, Clubs, Bars, Restaurants, Retail, Sports facilities.

Available colours:  



FESTA6.4E

4 x ATEO6 + EPA252

The combination of the ATEO6 loudspeakers' stunning design and high-quality components enables the FESTA6.4E set to be installed in any environment, guaranteeing a high-quality sound with elegant aesthetics.

Powered by an EPA252 Class-D amplifier, this system, using four ATEO6 loudspeakers, can cover areas of around 60 m² with a warm and powerful sound.

Features

- Elegant design
- CleverMount™ installation
- High-quality sound
- High-efficiency Class-D amplifier

Applications

Residential, Clubs, Bars, Restaurants, Retail, Education, Hotels, Public facilities, Corporate spaces.

Available colours: **B** **W**



FESTA6.5E

4 x ATEO6 + BASO12 + EPA254

The combination of the ATEO6 loudspeakers' stunning design and BASO12 bass cabinet, both featuring high-quality components, enables the FESTA6.5E set to be installed in any environment, guaranteeing an impressive sound with elegant aesthetics.

Powered by an EPA254 Class-D power amplifier, this system, using four ATEO6 loudspeakers and a BASO12 bass cabinet can cover areas of around 120 m² with a warm and powerful sound.

Features

- Elegant design
- CleverMount™ Installation
- High-efficiency Class-D amplifier
- True and impressive bass

Applications

Residential, Clubs, Bars, Restaurants, Retail, Sports facilities.

Available colours: **B** **W**





Full range wall speakers

The XENO series is a loudspeaker range specifically designed for fixed audio installations in modern environments, offering two different sizes of contemporary and elegantly designed products.

What makes them so unique is their full-range audio design, allowing them to be used without additional bass cabinet.

The exceptional accuracy and clarity coming from the VEXO8 is recommended to be extended with a complementary bass cabinet adding the punchy and deep bass, resulting in a stunning sound over the entire frequency range.



XENO6
6" Full-range loudspeaker cabinet - 2-way

The XENO6 is the 6" version, featuring a 1" dome tweeter and a 6" Mid / Low frequency driver, ensuring a high-fidelity sound. This wooden cabinet is fitted with a slim and elegant front grill.

160W 8 Ohm Available colours:
/B /W



XENO8
8" Full-range loudspeaker cabinet - 2-way

The XENO8 is the 8" version, with a 1" dome tweeter and a 8" Mid / Low frequency driver, ensuring a true-to-nature, high-fidelity reproduction of music and speech. This wooden cabinet is fitted with a slim and elegant front grill.

240W 8 Ohm Available colours:
/B /W



VEXO8
8" High-power loudspeaker cabinet - 2-way

The VEXO8 is a high-output loudspeaker cabinet, featuring a 8" high efficiency Mid / Low range driver and 1" compression driver fitted with a 100° x 80° coverage horn, providing a powerful and detailed sound in a compact cabinet.

350W 8 Ohm Available colours:
/B /W

FESTA8.2E

2 x XENO8 + EPA502

The contemporary design of the XENO8 loudspeakers makes the FESTA8.2E set suitable for fixed installations requiring a high-quality and full-range sound without an additional bass cabinet.

Powered by an EPA502 Class-D power amplifier, this system, using two XENO8 loudspeakers, can cover areas of around 30 m² with high-quality, full-range sound with optimal acoustical performance and protection.

Features

- Elegant and compact design
- High-quality full-range sound
- High-efficiency Class-D amplifier

Applications

Residential, Clubs, Bars, Restaurants, Retail, Education, Hotels, Public facilities, Corporate spaces.

Available colours: **B** **W**



FESTA8.4E

4 x XENO8 + EPA502

The contemporary design of the XENO8 loudspeakers makes the FESTA8.4E set suitable for fixed installations requiring a high-quality and full-range sound without an additional bass cabinet.

Powered by an EPA502 Class-D power amplifier, this system, using four XENO8 loudspeakers, can cover areas of around 60 m² with high-quality, full-range sound with optimal acoustical performance and protection.

Features

- Elegant and compact design
- High-quality full-range sound
- High-efficiency Class-D amplifier

Applications

Residential, Clubs, Bars, Restaurants, Retail, Education, Hotels, Public facilities, Corporate spaces.

Available colours: **B** **W**



FORTE8.3

2 x VEXO8 + BASO15 + SMQ500

The contemporary and compact design of both the VEXO8 loudspeakers and the BASO15 bass cabinet makes the FORTE8.3 set suitable for both fixed and mobile applications where a powerful solution with a small footprint is required.

Powered by a SMQ500 WaveDynamics™ Class-D power amplifier, this system, using two VEXO8 loudspeakers and a BASO15 bass cabinet, can cover areas of around 60 m² with a stunning sound.

Features

- Compact solution
- Exceptional powerful & clear bass
- High-efficiency Class-D amplifier
- WaveDynamics™ technology

Applications

Bars, Restaurants, Clubs, Discotheques, Live performances, Sports facilities.

Available colours: **B** **W**



FORTE8.6

4 x VEXO8 + 2 x BASO15 + SMQ750

The contemporary and compact design of both the VEXO8 loudspeakers and the BASO15 bass cabinets makes the FORTE8.6 set suitable for both fixed and mobile applications where a powerful solution with a small footprint is required.

Powered by a SMQ750 WaveDynamics™ Class-D power amplifier, this system, using four VEXO8 loudspeakers and two BASO15 bass cabinets, can cover areas of around 120 m² with a stunning sound.

Features

- Compact solution
- Exceptional powerful & clear bass
- High-efficiency Class-D amplifier
- WaveDynamics™ technology

Applications

Bars, Restaurants, Clubs, Discotheques, Live performances, Sports facilities.

Available colours: **B** **W**





High-power wall speakers

The PX series are compact full-range loudspeaker cabinets for a wide variety of indoor applications. They come in four different models, each of them with different size and performance meeting the requirements for every specific application.



PX110 MK2

10" Loudspeaker cabinet
2-way

The PX110 MK2 is the 10" model of the PX family, consisting of a 10" high output woofer and a compression driver with 1" voice coil. The compression driver is fitted with a 90° x 60° coverage horn which can be rotated allowing both horizontal and vertical use.

350W

8 Ohm

Available colours:



PX112 MK2

12" Loudspeaker cabinet
2-way

The PX112 MK2 is the 12" model of the PX family, consisting of a 12" high output woofer and a compression driver with 1.3" voice coil. The compression driver is fitted with a 90° x 75° coverage horn which can be rotated allowing both horizontal and vertical use.

600W

8 Ohm

Available colours:



PX115 MK2

15" Loudspeaker cabinet
2-way

The PX115MK2 is the 15" version of the PX family with a 1.3" HF driver and a 15" medium frequency range speaker. A passive crossover network and tweeter overload protection circuit are integrated.

600W

8 Ohm

Available colours:



FORTE10.2

2 x PX110MK2 + SMA500

The full-range sound coming from the PX110MK2 cabinets enables the FORTE10.2 set to stand strong in medium installations requiring high-power sound.

Powered by a SMA500 WaveDynamics™ Class-D power amplifier, this system, using two PX110MK2 loudspeakers can cover areas of around 60 m² with a very clear sound.

Features

- Very powerful sound
- High-quality full-range sound
- High-efficiency Class-D amplifier
- WaveDynamics™ technology

Applications

Clubs, Bars, Events, Concert venues, Sports facilities.

Available colours: B W



FORTE10.6

4 x PX110MK2 + 2 x BASO15
+ SMQ750

The full-range sound coming from the PX110MK2 cabinets combined with highly powerful BASO15 bass cabinets enables the FORTE10.6 set to stand strong in medium to large scale installations requiring high-power sound.

Powered by a SMQ750 WaveDynamics™ Class-D power amplifier, this system, using four PX110MK2 loudspeakers and two BASO15 cabinets, can cover areas of around 160 m² with a very clear sound and powerful bass.

Features

- Very powerful sound
- Exceptional powerful & clear bass
- High-efficiency Class-D amplifier
- WaveDynamics™ technology

Applications

Bars, Restaurants, Clubs, Discotheques, Live performances, Sports facilities.

Available colours: B W



FORTE12.2

2 x PX112MK2 + SMA750

The full-range sound coming from the PX112MK2 cabinets makes the FORTE12.2 set suited for medium to large scale installations with a highly demanding performance criteria.

Powered by a SMA750 WaveDynamics™ Class-D power amplifier, this system, using two PX112MK2 loudspeakers, can cover areas of around 80 m² with an extremely powerful sound.

Features

- Extremely powerful sound
- High-quality full-range sound
- High-efficiency Class-D amplifier
- WaveDynamics™ technology

Applications

Clubs, Bars, Events, Concert venues, Sports facilities.

Available colours:  



FORTE12.6

4 x PX112MK2 + 2 x BASO15
+ SMQ750

The full-range sound coming from the PX112MK2 cabinets combined with highly powerful BASO15 bass cabinets makes the FORTE12.6 set suited for large scale installations with a highly demanding performance criteria.

Powered by a SMQ750 WaveDynamics™ Class-D power amplifier, this system, using four PX112MK2 loudspeakers and two BASO15 cabinets, can cover areas of around 200 m² with an extremely powerful sound, over the entire frequency range.

Features

- Extremely powerful sound
- Exceptional powerful & clear bass
- High-efficiency Class-D amplifier
- WaveDynamics™ technology

Applications

Bars, Restaurants, Clubs, Discotheques, Live performances, Sports facilities.

Available colours:  



FORTE15.3

2 x PX115MK2 + BASO18 + SMQ750

The clear and natural sound coming from the PX115MK2 cabinets combined with a high-performance BASO18 bass cabinet makes the FORTE15.3 set suited for large scale installations with highly demanding performance criteria.

Powered by an SMQ750 WaveDynamics™ Class-D power amplifier, this system, using two PX115MK2 loudspeakers and one BASO18 cabinets, can cover areas of around 120 m² with an extremely powerful sound, over the entire frequency range.

Features

- High performance, full range sound
- Powerful, but compact enclosure
- High-efficiency Class-D amplifier
- WaveDynamics™ technology

Applications

Clubs, Bars, Events, Concert venues, Sporting facilities

Available colours:  



FORTE15.6

4 x PX115MK2 + 2 x BASO18 + SMQ750

The clear and natural sound coming from the PX115MK2 cabinets combined with two high-performance BASO18 bass cabinets makes the FORTE15.6 set suited for large scale installations with highly demanding performance criteria.

Powered by an SMQ750 WaveDynamics™ Class-D power amplifier, this system, using four PX115MK2 loudspeakers and two BASO18 cabinets, can cover areas of around 250 m² with an extremely powerful sound, over the entire frequency range.

Features

- High performance, full range sound
- Powerful, but compact enclosure
- High-efficiency Class-D amplifier
- WaveDynamics™ technology

Applications

Clubs, Bars, Events, Concert venues, Sporting facilities

Available colours:  





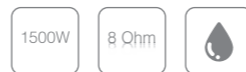
High-output speaker system

The FX series is a unique and versatile speaker system series. When you combine the FX1.18 bass cabinet with the FX3.15 3-way active speaker cabinet, this truly modular system can be scaled and adapted for every application where a powerful system with a high clarity and sound quality is required.



FX3.15
15" Loudspeaker cabinet 3-way

The FX3.15 is a 3-way high-output, active driven compact High / Mid / Mid-Bass speaker cabinet which is a part of the unique and versatile FX series system.



FX1.18
18" Loudspeaker cabinet sub-low

The FX1.18 is a high-output, horn-loaded single 18" bass cabinet which is designed as a part of the unique and versatile FX series system.



FORTE315.2

2 x FX3.15 + 1 x SMQ500

The FX3.15 is a compact, high-output full range 3-way speaker cabinet. In combination with the SMQ500 amplifier, this system can cover areas of around 200m² using two FX3.15 speakers and powered by one SMQ500 amplifiers.

Features

- WaveDynamics™ technology
- Weatherproof paintwork
- Metal frame for save & easy rigging
- High-efficiency Class-D amplifier

Applications

Clubs, Arena's, Events, Concert venues, Sporting facilities.



FORTE315.4

2 x FX3.15 + 2 x FX1.18 +
2 x SMQ500 + 1 x SMQ700

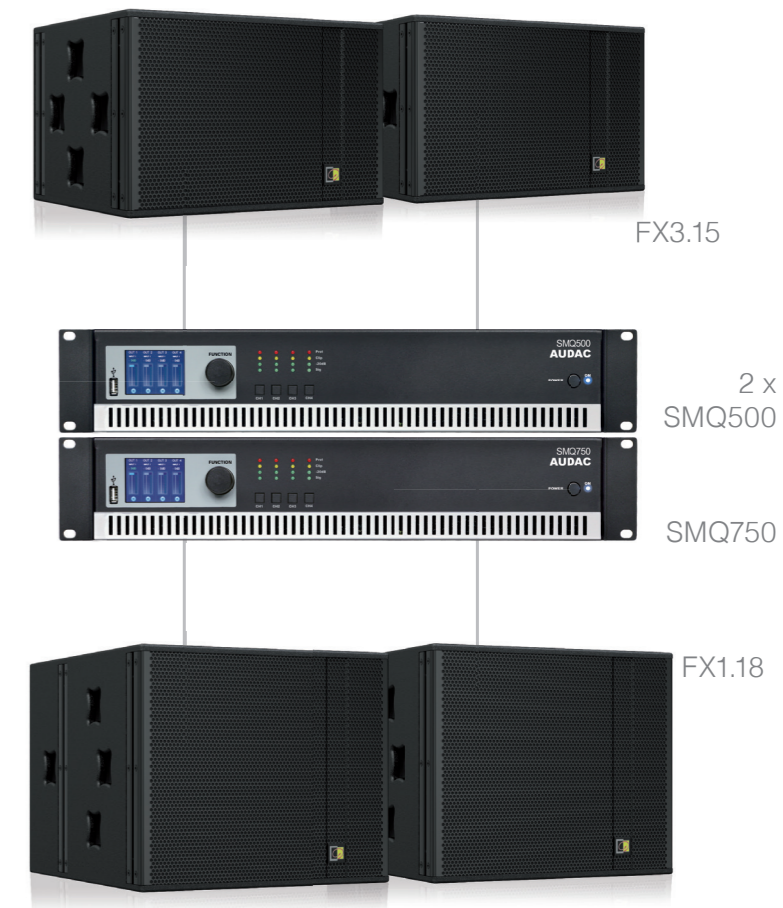
The FX series is a unique and versatile speaker system. The combination of the FX1.18 bass cabinet with the FX3.15 3-way speaker cabinet creates a powerful system with a high clarity and sound quality. This system, using two FX3.15 speakers, two FX1.18 bass cabinets and powered by one SMQ750 and two SMQ500 amplifiers, can cover areas of around 250m².

Features

- WaveDynamics™ technology
- Weatherproof paintwork
- Metal frame for save & easy rigging
- High-efficiency Class-D amplifier

Applications

Clubs, Arenas, Events, Concert venues, Sporting facilities.





Outdoor speakers

AUDAC offers a wide range of solutions for all outdoor applications. In this catalog, you will find solutions from WX series outdoor range. Thanks to a watertight connector, a durable ABS housing, a specially designed drain hole and a DuraWeather™ coating, this range has an IP55 rating and has proven its worth for decades in extreme weather conditions.



SSP500

2-way flush mount sauna speaker

The SSP500 is a flush mount loudspeaker, especially designed to be used in rooms with a very high temperature and level of humidity, such as saunas, bathrooms, swimming pool areas, ...

Available colours:



WX302/O

3" Outdoor wall speaker
2-way

The WX302/O speaker is specifically designed for outdoor use and lends itself to a variety of applications, ensuring true-to-nature, high-fidelity reproduction of music and speech.

Available colours:



WX502/O

5" Outdoor wall speaker
2-way

The WX502/O is a powerful 2-way performance speaker which is especially designed for outdoor use, ensuring true-to-nature, high-fidelity reproduction of music and speech.

Available colours:



WX802/O

8" Outdoor wall speaker
2-way

The WX802/O is a powerful 2-way, 8" loudspeaker cabinet which is specifically designed for outdoor use. It lends itself to a wide variety of outdoor applications, ensuring a clear and powerful sound reproduction.

Available colours:



PURRA5.1

2 x SSP500 + AMP20MK2

The high-quality sound coming from two SSP500 loudspeakers in combination with an AMP20MK2 mini stereo amplifier will leave you stunned. Besides the fact that the SSP500s are moisture resistant, they also withstand extreme temperatures.

Features

- Discreet design
- High-quality sound
- IP44 Ingress protection
- High-efficiency
- Optional remote

Applications

Saunas, Bathrooms, Swimming pool areas.

Available colours (remotes):  



WP523
(optional wall panel)



VC3208
(optional wall panel)



SSP500

AMP20MK2

PURRA5.2E

2 x WX502/O + EPA152

The characteristics of the WX502/O loudspeaker enable the PURRA5.2E set to be installed in places such as terraces, gardens, spas, ... offering a weather and humidity resistant solution while guaranteeing an extraordinary sound.

Features

- Compact solution
- High-quality sound
- IP55 Ingress protection
- High-efficiency Class-D amplifier

Applications

Gardens, Terraces, Spas, Bathrooms.

Available colours:  



WX502/O

EPA152



Digital Matrix Systems

With innovation at the base of AUDAC's development, the brand offers comprehensive, expandable and powerful solutions for nearly every situation.



Amplifiers

AUDAC offers a wide range of digital multi-channel amplifiers for single and multi-zone systems.



Speakers

With more than 80 loudspeaker models, AUDAC proves that it can offer you the most accurate solution for your installation.



Microphones

From the most robust hand-held or headset microphones to advanced paging systems, AUDAC provides you with the extension for your voice.



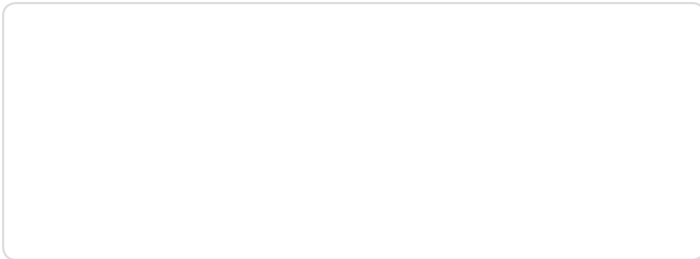
Audio Sources

AUDAC pays great attention to its multimedia sources. The development of cutting edge digital audio technology has led to a complete range of sources that will inspire you!

Looking for advice? Or a custom audio solution?

Contact info@audac.eu

YOUR AUDAC PARTNER



audac.eu
info@audac.eu